

AGNIESZKA TOMAS (IA UW)

*MUNICIPIUM NOVENSIUM?*REPORT ON THE FIELD SURVEY AT OSTRITE MOGILI, VELIKO TURNOVO DISTRICT  
(PL. 121-132)

Since 1964, when B. Gerov published the inscription mentioning *m(unicipium) N(ovensium)*<sup>1</sup>, discussion on the localisation of the municipality of *Novae* has been continuing. The altar bearing the inscription was found on the eastern annex of *Novae*, not far from the defence walls, which are dated as soon as the last quarter of the 3rd century A.D.<sup>2</sup> Thirty years later, in the Graeco-Roman town of *Nicopolis ad Istrum* placed about 50 km south from *Novae*, another interesting find came to the light: the altar erected by two priests of *Mater Deorum* and *Liber Pater* and dedicated *vexillo Novesium Oppianorum*<sup>3</sup>. The altar is dated by the editor at A.D. 212 or 215<sup>4</sup>. The interpretation of the *vexillum* is very difficult and doubtful. It can be both interpreted as an organization or its standards; a group of veterans, craftsmen or other *collegium*<sup>5</sup> or most probably, a religious association<sup>6</sup>. The connection with *collegium* of military function is also possible. The presence of such "militiae" is attested in Balkan provinces

from the end of the 2nd century<sup>7</sup>. The written sources can be again compared with new archaeological data obtained within last few years.

**Topography of the *castra* surroundings**

Within the radius of 2 km around the military camp the following settlements and settlement traces were localised (**Fig. 1**): the *canabae legionis* extended 100-300 m around the camp<sup>8</sup> with the peristyle villa<sup>9</sup>, cemeteries<sup>10</sup>, pottery and brick kilns<sup>11</sup>, a sanctuary of eastern deities<sup>12</sup>, harbour<sup>13</sup>, aqueducts<sup>14</sup> and roads<sup>15</sup>. All these elements are typical for majority of military camps surroundings on the Rhein and Danube limes<sup>16</sup>. The territory with infrastructure of the nearest vicinity of the camp, which was *de facto* under military control, or even was used by the *legio*<sup>17</sup>, had probably the status of *ager publicus*<sup>18</sup>. Just

<sup>1</sup> GEROV 1964 (1980) = AE 1964, 224 = IGLNov 39 (*Novae*): *Dee sanc[te] / Placidi / Iulius / Statilis / augustalis / m(unicipii) N(ovensium) ex vo(to) posu[it] n(uminis) m(onitu)*; cf. KOLENDO 1969; dating according to Kolendo (IGLNov) A.D. 180-250. Building and sacral activity of augustales is attested by many inscriptions from settlements placed near forts, cf. p. ex. from *Brigetio* (BARKÓCZI 1954 = AE 1944, 110; 108; CIL III 10972; 11042 and AE 1962, 43; AE 1997, 1267) or *Apulum* (AE 1996, 1278 = IDR V/2, 534; CIL III 976 = IDR V/1, 7; CIL III 1082 = IDR V/1, 203).

<sup>2</sup> DIMITROV, CHICHKOVA, SOULTOV 1964; CHICHKOVA 1980: 59; SARNOWSKI 1976: 62-63.

<sup>3</sup> TSUROV 1995a = AE 1995, 1362 (*Nicopolis ad Istrum*): *Aug(usto) sacrum / pro salute Imperato(ri)s / L(ucius) Oppius Maximus et L(ucius) Oppius / Ianuarius sacerdotes Matris / Deum et Liberi Patris vexillo / Novesium Oppianorum / aram de suo posuerunt*.

<sup>4</sup> TSUROV 1995b.

<sup>5</sup> SHA, Gall. duo, 8,6; cf. AE 1937, 194, Aquincum: *I(ovi) O(ptimo) M(aximo) Lib(ero) P(atri) / Ael(ius) Annianus / pro salute sua / et vexillario(rum) / col(legii) cento(nariorum) Ul(pius) / Victorinus / Aur(elius) Antoninus / Dub(ius?) Florentinus / Veg(etius?) Septiminus / Vibul(li)us(?) Stat(ius) Filu(s) / v(otum) s(olverunt) l(ibentes) m(erito)*.

<sup>6</sup> According to the editor, the *vexillum* could be a fire-brigade (TSUROV 1995a, 11), but cf. AE, ad no. 1362. L. *Oppius Maximus* raised the altar in for *Mater Deum* in *Novae* (IGLNov 34). Comparing the inscription from *Aquincum* (see above,

note 5), there could be a connection between *vexillum* and the cult of *Liber Pater*. The members of *Oppii* family appear in *canabae Durostorum* (CIL III, 7474, *Cn. Oppius Soterichus* and *Oppius Severus*).

<sup>7</sup> GEROV 1980c. From the 3rd century, both religious and craftsmen collegia, are called *numeri*. Cf. SZTAJERMAN 1960: 413.

<sup>8</sup> PARNICKI-PUDEŁKO 1981; MROZEWICZ 1981; idem 1982: 61; idem 1984: 296; SARNOWSKI 1984: 229, n. 33; CONRAD, STANCHEV 2002: 674.

<sup>9</sup> CHICHKOVA 1992.

<sup>10</sup> SHKORPIL 1905, 457; KOLKÓWNA 1961; SADURSKA 1984; PRESS, SARNOWSKI 1987: 304, 316; CONRAD, STANCHEV 2002: 675.

<sup>11</sup> SARNOWSKI 1976: 62, fig. 1, 2; MITOVA-DJONOVA 1966; VULOV 1966.

<sup>12</sup> NAYDENOVA 1990; eadem 1999.

<sup>13</sup> SARNOWSKI 1996.

<sup>14</sup> STEFANOV 1930; BIERNACKA-LUBAŃSKA 1997.

<sup>15</sup> STEFANOV 1956: 72, fig. 77; CONRAD, STANCHEV 2002: 676; also unpublished research by P. Dyczek in 2000.

<sup>16</sup> VITTINGHOFF 1971: 299; MÓCSY 1974: 351 sq.; PISO 1991: 137.

<sup>17</sup> VITTINGHOFF 1974.

<sup>18</sup> VITTINGHOFF 1971: 302; idem 1974: 110 sq.; GEROV 1980a: 61, 65 sq.; PISO 1991: 137.



beyond the border marked with the circle with radius of the *leuga* (2.22 km) from the centre of the camp<sup>19</sup>, we find the villa placed southeastern from *Novae*<sup>20</sup>, the sanctuary of *Liber Pater*<sup>21</sup>, some cemeteries<sup>22</sup> and other settlement traces and constructions<sup>23</sup>. Many significant traces (at least villas) are also placed under the modern town of Svishtov<sup>24</sup>. According to S. Conrad, who carried field surveys in the vicinity of *Novae*, the regular parcelling of the area south from the castra is probable<sup>25</sup>. However the biggest separate settlement is placed about 2.5 km east from the camp in the place Ostrite Mogili<sup>26</sup>. Its range has been discussed for the last thirty years<sup>27</sup>.

### Previous research on the site of Ostrite Mogili

For the first time the site was investigated in 1948 by S. Stefanov<sup>28</sup>. In 1961 the Polish medieval archaeologists searching for Slavian settlements in the Svishtov region, localised three sites in the locality of Ostrite Mogili<sup>29</sup> (Fig. 2). All these places are within one big site,

situated between a small hill from the east and a little valley (*dere*) from the west<sup>30</sup>. In 1961 and 1962, 500 m east from the valley, next to the tumuli in the place Chiflishkite nivi, a Roman cemetery dated to the 3rd century A.D. was discovered<sup>31</sup>. In the autumn 1979 the first field survey using planigraphy method was carried by T. Sarnowski<sup>32</sup>. In May and June 1990 Bulgarian archaeologists from Gradski Istoricheskiy Musey (Historical Museum) in Svishtov carried another field survey and excavations in a few points within the site<sup>33</sup>. Traces of the wood-earth building were discovered, as also hand mills, metal objects and animal bones. Characteristic dispersion of material was noticed: in the eastern part of the site quantity of Roman and early Byzantine material was significant, while in the western part, medieval pottery was in majority. In the spring of 2000 the field survey in the vicinity of *Novae* were carried by P. Dyczek<sup>34</sup>. The planigraphy of Ostrite Mogili was repeated again<sup>35</sup>. The following paper presents the investigations from 1979 and 2000<sup>36</sup>.

<sup>19</sup> About the settlements *intra* and *extra leugam primam* see below.

<sup>20</sup> SARNOWSKI 1979; during the research two inscriptions were found (IGLNov 82 and 112) dated to A.D. 220-235 and A.D. 222-235.

<sup>21</sup> MITOVA-DJONOVA 1961.

<sup>22</sup> VULOV 1965; SOULTOV 1968: 47, n. 16, 24.

<sup>23</sup> Traces of settlements were also attested in surroundings of Tsarevec, south from *Novae*, on the territory of Svishtov and west of the town (cf. STEFANOV 1958: 341 sq.). The question of the presence of early Roman military installations on the Kaleto hill in Svishtov is difficult to solve: cf. RE V, col. 1805; VULOV 1962; HENSEL 1965: 262; GEROV 1977: 300; PRESS, SARNOWSKI 1987: 304; CONRAD, STANCHEV 2002: 674. The place is identified by P. Donevski (DONEVSKI 1997) with *Theodoroupolis* mentioned by Procopius (De aed. IV, 7): cf. RE V, col. 1805; VULOV 1962; HENSEL 1965: 262; GEROV 1977: 300; PRESS, SARNOWSKI 1987: 304; CONRAD, STANCHEV 2002: 674.

<sup>24</sup> STEFANOV 1958: 341 sq.

<sup>25</sup> CONRAD 2003.

<sup>26</sup> HENSEL 1965: 281-284; GEROV 1977: 300, n. 4; detailed literature below; it seems that the medieval site localised by S. Parnicki-Pudełko during preliminary prospection around *Novae* in 1960 (PARNICKI-PUDEŁKO 1961: 87, fig. 23) 700 m east from the eastern walls can not be identical with the Ostrite Mogili site.

<sup>27</sup> According to Gerov (GEROV 1977: 300-301), the presence of „civil” inscriptions in *canabae*, among them the altar erected by the priest of imperial cult (AE 1964, 224) indicates on municipalization of *canabae* at the end of the 2nd or beginning of the 3rd cent. A.D.; the problem of localization of *municipium Novensium* was discussed among others by MROZEWICZ

1980; idem 1981; idem 1982: 65, 85; idem 1984: 296; SARNOWSKI 1976: 62-63; idem 1984: 228, n. 33; idem 1997: 498; IVANOV 1997: 600; idem 1999: 268; cf. CONRAD, STANCHEV 2002: 674.

<sup>28</sup> STEFANOV 1958: 351; GEROV 1977: 300, n. 4.

<sup>29</sup> The survey was led by Z. Hilczérówna; published in: HENSEL 1965: 281-284.

<sup>30</sup> According to P. Donevski, traces of pre-Roman settlement are placed east from the valley; cf. DONEVSKI 1991.

<sup>31</sup> The place was published as a cemetery 2 km east from Vardim, which is 0.5 km east from Ostrite Mogili (VULOV 1965), but the place is situated 0.5 km east from Ostrite Mogili.

<sup>32</sup> Unpublished, but one legionary stamp (inv. no. 1/79c, Fig. 3. 2); cf. infra, note 61.

<sup>33</sup> DONEVSKI 1991 (short report). Six trenches were made, explored from 12.06 to 29.06.1990.

<sup>34</sup> About 2000 the team from Roman-Germanic Commission Frankfurt/M. of the German Archaeological Institute had been continuing their programme of field surveys in the area of lower Yantra and surroundings of *Iatrus* and *Novae*. The survey was also made on the area of Ostrite Mogili. Cf. CONRAD 2006, 307 sq., fig. 12.

<sup>35</sup> Planigraphy of the site was made in two weeks by ten students led by A. Tomas; the survey was made by the Centre of Archaeological Research in *Novae* headed by P. Dyczek.

<sup>36</sup> I am very grateful to T. Sarnowski and P. Dyczek, who handed over the documentation and gave some important advice. The materials documented in 1979 have inventory numbers in a scheme: no/79w – small finds; no/79c – stamped bricks/tiles. The finds from 2000 have inventory numbers: no/00w – small finds; no/00m – mass finds; no/00c – stamped brick/tiles. The materials from the grave were marked with “GR” letters in inventory.



## Topography of the site

The site is placed on the high Danube bank, on the flat terrace, slightly falling to the north, on the height of 36 m to 50 m above the sea level (**Fig. 2**). Now fields, divided by the road, are parcelled and cultivated by the private owners from Svishtov (**Fig. 3**). The archaeological material is visible in big quantities on the whole area of 15 ha<sup>37</sup>. It is possible that some settlement traces, at least cemetery, are placed also west from Ostrite Mogili, where parcels are fenced, covered with private buildings and extensively cultivated<sup>38</sup> (**Fig. 4**).

## Remarks on the method

The method of planigraphy used during the research in 1979 was adapted by T. Sarnowski, according to the indications made by Polish researcher R. Mazurowski, who described his surveys carried in Poland in 1969<sup>39</sup>. Similar method joined with resistivity was introduced by the British team led by A. G. Poulter in the several sites placed in *Nicopolis ad Istrum* region<sup>40</sup>. The team-members had been going straight in recording units of the same width (**Fig. 5**) quantifying the artefacts every few meters and describing them with symbols. At Ostrite Mogili the units were 5 m x 5 m, but in 2000 also 2.5 m x 2.5 m in the eastern part. As the materials at Ostrite Mogili are very numerous, every square only few representative sherds were picked-up. All the small finds (metal, glass, terracotta etc.) were documented separately. The team-members were also obliged to notice the visibility and character of the surface. The stripes were plotted on the plan and correlated with some points measured to characteristic terrain features and GIS<sup>41</sup>, covering the whole site. The units created maps of surface finds in their dispersion. Introducing the method into the Mediterranean archaeology, or rather, on the site rich in material visible on the surface, have brought some methodical remarks.

In 1979 the survey were carried in direction east-west by 4 to 6 persons going in stripes 5 m wide and registering finds every 5 m in a line. Counted material included debris (stones, bricks and tiles, mortar), pottery

and bones. Some finds were documented in detail. The surveyed area covered about 7.5 ha and 155 finds were drawn and described.

In 2000 the survey were carried in direction south north by 6 to 9 persons and two others with metal detectors. Stripes had a width of 5 m in the western part and 2.5 m in the eastern part of the site, where the material is exclusively dense<sup>42</sup>. Respectively, every 5 or 2.5 m debris (stones, bricks and tiles, mortar, glass windows), pottery, glass objects, bones and metal finds were registered. The area covered with the survey was 10.5 ha. Almost 2000 finds were documented.

It seems that in the case of the site rich in archaeological material from different periods, strongly eroding in some parts (here eastern), used method has several faults. In the area, where the debris was accumulated, the researchers were made to estimate their quantity, which could have caused creation of non-existing condensations (in stripes!), as the estimations are made individually. Moreover, in the areas where bricks and pottery sherds where mixed with stones, it is extremely important to notify the crumbling of materials. In every case, the features of terrain and the character of cultivation has a big influence on visibility. The same method used twice on the same site, but in different direction showed all the possible faults, but also allowed to verify information and indicate real concentrations.

Collected data were the basis for 5 maps of material dispersion: pottery and building materials from 1979 and 2000 and one with small finds from 2000.

## Pottery and glass

In 2000, the difference in density of material in the western and eastern part was confirmed. In 1979, the quantity of Slavian pottery in the western part was significant, but during the research in 2000 the concentration disappeared. The concentrations of pottery registered in 1979 and 2000 do not cover (**Fig. 6**). In 2000 the little concentrations of glass slag was noticed in the western part.

The 80% of vessel pieces are dated to the 2nd-3rd centuries A.D. (**Fig. 7**), including big quantity of local

<sup>37</sup> According to S. Conrad the site covers the area placed eastward, surrounding the valley and including the field south from the road. Cf. CONRAD 2006: fig. 12. In 2000, we had not registered significant materials south from the road.

<sup>38</sup> But three tumuli are marked here on the modern Russian military maps from 1984.

<sup>39</sup> MAZUROWSKI 1971. The method was used by T. Sarnowski on the site of Kunla cheshma (villa southeast from *Novae*) in 1978; cf. SARNOWSKI 1979.

<sup>40</sup> POULTER 2004: 9 sq.

<sup>41</sup> In 2000. In 1979, measures from the characteristic points were made.

<sup>42</sup> Localization of the finds from 2000 was inventoried in a scheme: number of the stripe (from the east to the west), number of the square (from the south to the north) and the number of the person in a line, p. ex. stripe 1, square 10, no. 2. The only stripe 12A (north from the stripes 12, 13, 14 and perpendicular to them) was searched from the west to the east. The mass finds have only localization in stripes. Cf. **Fig. 6**.



Moesian *sigillata* produced in pottery workshops placed around *Nicopolis ad Istrum*<sup>43</sup> (Fig. 14). Only seven sherds come from imported *sigillata* vessels (Fig. 13. 4, 7), among them two or three of western origin<sup>44</sup>. Fragments of local vessels, both hand-made or wheel-turned (Fig. 13. 1, 2), have analogies on Geto-Dacian sites<sup>45</sup>. However their dating is very doubtful, because such vessels were produced on the Lower Danube area from pre-Roman, Roman to late Roman times<sup>46</sup>. Parallel sherds come even from workshops in *Nicopolis* region<sup>47</sup>. An example of interesting fusion of local tradition with a new technology used in the local pottery centres is a cup ornamented with a finger-squeezed appliqué (Fig. 14. 2). In contrary, the Late Roman table/kitchen pottery was almost unnoticeable. The only piece of a big dish ornamented with a concave rosette motive in the middle (Fig. 13. 9) probably comes from imported LR *sigillata*<sup>48</sup>. Fragment of a greyish-fired dish covered with dark grey coating and brown stripes is a single sherd of this type (Fig. 13. 8). Vessels made in similar technology were found in *Nicopolis*<sup>49</sup>, where appear in layers dated from the 2nd and 3rd to the 6th century. One fragment is identical with the rim from Ostrite Mogili, but it was found in a mixed layer<sup>50</sup>. According to R. K. Falkner such pottery reminds *terra sigillata grise*, but its dating is broader. Vast majority of the Late Roman pottery are amphorae and cooking vessels dated to the 4th century A.D. Cooking vessels are mainly big deep dishes and pots produced in local workshops, which survived after the Gothic invasions in the middle of 3rd century. The fragments of amphorae are numerous, but the Early Roman ones come from numerous types. The most significant group is Zeest 93 type<sup>51</sup> and local amphorae with flat handles produced from the second half of the 2nd century A.D.<sup>52</sup> Frequent are also fragments of small earthenware with turned handles made of fabric similar to that

used in local workshops<sup>53</sup>. The other types, among them many from the Black Sea coast centres, were also noticed. Late Roman amphorae are represented mainly by LRA 1 or 2 and similar to them – Kouzmanov XV<sup>54</sup>. Fragments of glass vessels are present on the whole area. They come from bowls, jugs and stemmed goblets (Fig. 13. 10-12), which have analogies in *Novae*<sup>55</sup>, and undoubtedly were produced at the site. The vessels are dated to 2nd – 4th centuries, although one fragment may come from a jug dated to the 6th century A.D. Almost all the pottery and glass vessels have analogies in *Novae*, *Nicopolis* and *Iatrus*<sup>56</sup>. Relatively big group are fragments of big hand-made jars with the S-profiled body and incised ornament of horizontal and waved lines (Fig. 18. 5-7). These are fragments of early medieval pottery appearing on the Slavian sites, both in Bulgaria<sup>57</sup> and Romania, for example on the other side of Danube, at Fintirele, 10 km west from Zimnicea<sup>58</sup>. The last group of sherds comes from „sgraffito” pottery dated to the 12th–14th centuries<sup>59</sup>. But the most significant are fragments from the Roman period.

### Building materials

The next group of registered materials are stones, fragments of bricks or tiles, mortar and glass windows<sup>60</sup>. During the first survey made in 1979 the concentration of debris was noticed in the eastern part in general. In 2000 the concentrations registered in the eastern part, where debris is very numerous, were regular. Also some small concentrations in the south-western were noticed (Fig. 8). Fragments of glass windows and big stone slabs were only in the eastern part of the site. The bigger quantity of stone and mortar was also notified here. Eight stamped bricks and tiles were found, among them four legionary ones<sup>61</sup> (Fig. 15. 2, 3). One stamped brick comes

<sup>43</sup> SOULTOV 1983.

<sup>44</sup> One fragment of south Gaulish *sigillata* from Flavian period, found during the excavations of P. Donevski in 1990, was published by DIMITROVA-MILČEVA (2002, no. 162, Taf. 10). Cf. above, note 33.

<sup>45</sup> SCORPAN 1970 and cited literature; *Styrmen* 1980: 48-52, list of analogies no. 4.

<sup>46</sup> SCORPAN 1970; idem 1973, especially fig. 1.

<sup>47</sup> SOULTOV 1983: tab. XIX, XX, 3.

<sup>48</sup> HAYES 1972: style A, fig. 41; cf. BÖTTGER 1982: 63.

<sup>49</sup> FALKNER 1999: 85, ware 78.

<sup>50</sup> FALKNER 1999: fig. 9.48, no. 993.

<sup>51</sup> ZEEST 1960: type 91-93; cf. DYCZEK 1999: 189-192, type 29.

<sup>52</sup> SOULTOV 1983: 74, type 1, tab. XXXIV, 3.

<sup>53</sup> DYCZEK 1999: 205-209, type 34.

<sup>54</sup> BJELJAJAC 1996: type XIX and XX; KOUZMANOV 1985: type XIII, XV, XIX.

<sup>55</sup> OLCZAK 1995.

<sup>56</sup> BÖTTGER 1982; BÖTTGER 1991; BÖTTGER 1995.

<sup>57</sup> VUZHAROVA 1976.

<sup>58</sup> COMŞA 1969.

<sup>59</sup> DOLMOVA 1985.

<sup>60</sup> Some years ago, the resting of stone structures were still visible. In 2000, there was no traces of walls on the surface.

<sup>61</sup> Published stamp from Ostrite Mogili: [LEG]I IT[AL] inv. no. 1/79c, SARNOWSKI 1997: 498-499; on the site were also found: 1 stamp of the legio I Minervia, 1 stamp with a boat, other stamps of the legio I Italica, and Late Roman LEPIFICOR type stamps, as well as private stamps; cf. IVANOV 2002: 119, 123, fig. 87.



from the destroyed grave localized in the southwestern part<sup>62</sup> (Fig. 16. 6). The other stamped bricks or tiles were probably produced in non-military workshops. Three of them have a shorting C AT and C ANT MAG (Fig. 15. 5-7). According to T. Sarnowski the shorting should be probably read *C(aius) A[n]ton(ius) Mag(nus)*, or rather (*opus*) *C(aii) A[n]ton(ii) Mag(ni)*, or simply *C(ai) A[n]ton(ii) Mag(ni)*<sup>63</sup>. One piece of a brick with a stamp P CP, has no analogies in regular material from *Novae* and its surroundings (Fig. 15. 4).

## Other finds

During the first research in 1979, some small finds were registered, but they were not numerous. In 2000 all the small finds were charted (Fig. 9). These are coins, adornments, terracotta and lamps, glass vessels, weapon, metal tools, weaving weights, hand mills and additionally bones and glass production waste. All these materials were put on the map at scale 1:3000 with hope to find some additional information. In the eastern part of the site the coin of Elagabalus was found, as also majority of arrow spikes, weaving weights and hand mills. In the western part, the early medieval material is more noticeable: both pottery and small finds and twelve coins. But also here, the terracotta eagle and a coin of Probus (*antoninianus*) were found. In the southwestern part of the site, not far from the present road, a destroyed, robbed grave was localized. Some small finds are presented below<sup>64</sup>.

**Coins.** Among 23 coins, as many as 20 pieces are medieval – mostly concaved bronze coins. The only anonymous Byzantine *folles* comes from 10th-11th century<sup>65</sup>. Three coins are Roman: one is *antoninianus* of Probus from A.D. 277<sup>66</sup> and severely polished bronze of Elagabalus minted in *Pautalia* dated to A.D. 218-222<sup>67</sup>. The third, damaged bronze coin is probably of local emission from the half of the 3rd century A.D.<sup>68</sup>

**Terracotta eagle.** The figure is made of fine

fabric covered with reddish coating, similar to terracotta figures produced in *Nicopolis* area workshops<sup>69</sup> (Fig. 16. 7). The place of finding suggests that it may have come from a grave<sup>70</sup>.

**Metal finds.** The weapons are mainly arrow spikes of forms known from *Novae* (Fig. 17. 1-3)<sup>71</sup>. These are pieces quite popular in the Central-Eastern Europe up to the medieval period. Other metal objects are bronze ring, spur, fragments of bronze coverings and iron tools, which cannot be surely dated to the Roman period (Fig. 17. 4-6). A small fragment of bronze fibula was also found in the western part of the site, but it was very badly preserved.

**Glass bracelets.** More than 10 pieces of glass bracelets were documented. Majority of them are made of dark blue glass; the only one is reddish-black (Fig. 18. 1-3). The analogies mainly come from medieval sites<sup>72</sup>, although several pieces dated to the Roman period were also found in *Novae*<sup>73</sup>.

**Fragment of a votive plate.** In 1979, fragment of a marble votive plate was found (Fig. 17. 7). Almost undoubtedly it belonged to the representation of the Thracian raider. The cult is attested in *Novae* and its closest surroundings<sup>74</sup>.

**Bones.** Bones were counted both in 1979 and 2000. During the first survey they were regularly dispersed on the whole site. In 2000 bones were registered in several concentrations (Fig. 9). Mostly these were animal ones, but one human bone was also found in the eastern part. As we are convinced that in the Roman period there were situated buildings, not a cemetery, the human bone could have been brought from the other place by animals or come from modern times, including wars in 19th and 20th centuries.

## Chronology

The earliest traces of settlement registered in this area are dated to the Neolithic period<sup>75</sup>. There are no

<sup>62</sup> Similar stamps were found in debris layer of *valetudinarium*, but their dating is doubtful; cf. SARNOWSKI 1983: no. VI 80.

<sup>63</sup> Similar interpretation by GEROV 1980b. Cf. CIL III 144642 (*Dimum*) = GEROV 1954: no. 349; CIL III 7621 (*Svishtov*) = GEROV 1954: no. 534; RAKEVA-MORFOVA 1970: 39; SARNOWSKI 1983: fig. 18, no. XXV1-4, fig. 19, no. XXV5 (*Novae*). I am grateful to Prof. T. Sarnowski, who with I consulted regular material.

<sup>64</sup> Many small finds are not mentioned here, among them lamps, weaving tools, stone artefacts. The complex publication will be presented in *Novensia*.

<sup>65</sup> See cat. no. 46.

<sup>66</sup> See cat. no. 33. The coins were identified by P. Jaworski, who

I am very grateful.

<sup>67</sup> See cat. no. 34. The legend is unreadable; cf. MOUSHMOV 1912: 231 sq.

<sup>68</sup> See cat. no. 35.

<sup>69</sup> SOULTOV 1983: 93, tab. LI, 4-7.

<sup>70</sup> Many burials in the area contain terracotta figures produced in Butovo-Pavlikeni workshops; cf. VULOV 1965.

<sup>71</sup> GACUTA 1987: 167, tab. XXXII.

<sup>72</sup> P. ex. OVCHAROV, HADJIYEVA 1990: fig. 68.

<sup>73</sup> OLCZAK 1998: 54.

<sup>74</sup> KOLENDO 1991.

<sup>75</sup> HENSEL 1965: 281-284.



significant traces of pre-Roman settlement here<sup>76</sup>, although some Thracian pottery fragments were found east from the site<sup>77</sup>. Majority of finds are dated to the 2nd- 3rd centuries A.D. (Fig. 10). These materials are also the most differentiated in forms and function. The grave from the south-western part comes from this period, too (Fig. 16. 1-4). Second group comes from early medieval (8th-11th centuries A.D.) and medieval (12th-14th centuries A.D.)<sup>78</sup>. The third group are materials from Late Roman period, which consists of cooking pottery, amphorae and some glass vessels. The settlement could have existed in some form then, as some pottery sherds and stamped bricks/tiles from this period were notified<sup>79</sup>.

### Remarks on the topography of civil settlements placed at Roman forts

Comparison of settlement patterns around Roman forts along the provincial borders on Rhine, Danube and Britain made by Romanian researcher I. Piso, suggests that majority of civil settlements analogical to the Ostrite Mogili site were situated beyond the borderline set at the distance of 2.22 km around the camp (Fig. 11). This is a distance suitable to the ancient measure of *leuga*<sup>80</sup>. The area of the settlements, which received the municipal status reaches most frequently some tens hectares<sup>81</sup>. The settlement placed 2.5 km east from the *castra legionis I Italiae* (Fig. 1) is relatively small with its 15 ha<sup>82</sup>, even if one takes into account the possible erosion of the river bank<sup>83</sup>. In comparison the estimated area of *canabae* is 70-80 ha<sup>84</sup>. The total area has to be reduced by the probable cemetery in south-western part of the site, or even little further along the road, as the cemetery continues east from the site. Maybe the area between the borderline set by *leuga* and the place, where the western side of settlement was localised, also belongs to the site. Unfortunately that sector is covered with private estates and intensively

cultivated gardens. Anyway, possible another 6 ha could be added, which still doesn't make the site significant in size. There was no distinct traces of settlement in the area south from the present road Svishtov-Vardim.

The maps of density of finds correlated with the topography of the site gave some outline of the settlement. Taking into account Roman traditions in topography of villages and small towns<sup>85</sup>, as well as comparison with other investigated sites of this type<sup>86</sup>, one can try to localize some elements of the settlement (Fig. 12). The course of the road along the Danube is almost identical as the ancient one<sup>87</sup>. The location of a cemetery alongside, east and west of Ostrite Mogili is also certain. Dense building up with perpendicular streets is possible, especially in the eastern part<sup>88</sup>. The other elements of infrastructure and building covering are only hypothetical. The finds of legionary bricks/tiles can suggest the presence of a building raised by provincial administration, including roadside post or customhouse<sup>89</sup>. One cannot exclude a possibility of secondary use of stamped bricks or other reason of their presence on civil settlement<sup>90</sup>. The findings of glass production waste, especially on the western part of the site, can indicate that some glass furnaces were placed here, simultaneously to these found in *Novae*, dated to the 3rd - 7th century A.D.<sup>91</sup>

### The significance of the Ostrite Mogili settlement

The civil settlement placed at Ostrite Mogili played some quite noteworthy role at least to the half of the 3rd century A.D. The significantly small amount of the Late Roman artefacts is a testimony of the abandonment or destruction of the settlement in this period. Maybe the process of abandonment began some years earlier, when the reforms of Septimius Severus allowing soldiers living in *canabae* were introduced and the settlements around

<sup>76</sup> The vast majority of civil settlements raised on the territories conquered by Romans was located on the plain fields, in places different from the pre-Roman settlements; cf. PETRIKOVITS 1977: 94-95. Traces of Late Bronze and Late Iron Age settlement were notified east from the camp; cf. CHICHIKOVA 1980: 60-63; PRESS, SARNOVSKI 1987: 292-293.

<sup>77</sup> DONEVSKI 1991: 96; CONRAD 2006, 312-313, fig. 4.

<sup>78</sup> A few sherds dated to this period were found also west from Vardim in 2000.

<sup>79</sup> CONRAD, STANCHEV 2002; CONRAD 2003; see n. 56.

<sup>80</sup> The term *extra leugam* is attested by three inscriptions from Pfaffenberg near *Carnuntum*; cf. PISO 1991 (AE 1982: 777-778; CIL III, 14358).

<sup>81</sup> PETRIKOVITS 1977: 94; PISO 1991.

<sup>82</sup> PETRIKOVITS: loc.cit.

<sup>83</sup> Ibidem; LIPA 2000: 136, fig. 1.

<sup>84</sup> CONRAD, STANCHEV 2002: 674.

<sup>85</sup> VITRUV., VI, 1; TAC., *Ger. I*, 16: *Vicos locant non in nostrum morem conexas et cohaerentibus aedificiis: suam quisque domum spatio circumdat, sive adversus casus ignis remedium sive inscitia aedificandi.*

<sup>86</sup> P. ex. LENGYEL, RADAN 1980: fig. 21 (*Aquincum*); HORN 1987: fig. 542 (*Xanten*).

<sup>87</sup> CONRAD, STANCHEV: loc.cit.

<sup>88</sup> Cf. HESBERG, ZANKER 1997.

<sup>89</sup> Cf. PETRIKOVITS 1977: 102; VITTINGHOFF 1974: 121-122. Stamped bricks and tiles were also used in graves, also in cemeteries *extra leugam*.

<sup>90</sup> MASON 1988: 167.

<sup>91</sup> OLCZAK 1998: 87-89.



the camp had been growing up. But it seems, that the topography of *castra* surroundings are strictly connected with the presence of custom border east from *Novae*<sup>92</sup>. The settlement placed the closer to the border could have profited most, thus the civil settlement near *Novae* is oriented west (Fig. 1). In addition, the need for safety, which could be given by the camp, caused systematic attraction of civilians<sup>93</sup>. This corresponds with the building of walls of so-called eastern annexe of *Novae*. Such nucleation of civil and military sites is typical for the Lower Danube area in that period<sup>94</sup>. The question is which of these two sites received the municipal status and when. The answer seems to be not clear and has to wait for the further discoveries. Adherents of municipalization of *canabae* can use some

arguments including the lack of traces of secondary use on the altar erected by Iulius Statilis<sup>95</sup>. Even if these facts are coincidental, the fact is, that the epigraphic data mentioning *m(unicipium) N(ovensium)* or *origo Nov.* (if they refer to *Novae* on the Lower Danube) are dated as early as the beginning of 3rd century A.D.<sup>96</sup> According to L. Mrozewicz, who researched the population of *Novae*, the municipilization of the civil settlement could have been at the time of Marcus Aurelius<sup>97</sup>, but the analysis of the names is very doubtful<sup>98</sup>. Anyway, the inhabitants of the settlement at Ostrite Mogili most probably had a big chance to become a population of *municipium* – nevertheless where it was located.

### Catalogue

(description of fabric: finds from 1979 according to T. Sarnowski; finds from 2000 according to A. Tomas; about description of localization in inventory, see note 35)

- 1 – fragment of a hand-made vessel, body-sherd, fabric with medium-grained inclusions, medium quantity of mica and lime, slightly porous structure, hard, rough surface, colour 2.5YR6/6, applied ornament; inv. no. 5/32/00m (Fig. 13. 1);
- 2 – fragment of a hand-made vessel, wheel turned after modelling, body-sherd, fabric with medium-grained inclusions, medium quantity lime and sand, porous structure, hard, rough surface, colour from 5YR6/4 to 10YR5/4, ornament applied; inv. no. 4/4/00m (Fig. 13. 2);
- 3 – fragment of a *terra sigillata* vessel, fine fabric without inclusions; colour of fabric 5YR6/4, coating 5YR5/6; inv. no. 35/00w; stripe 19, separated from mass finds (Fig. 13. 3);
- 4 – rim of a bowl, fine fabric without inclusions, medium hard, fabric beige 5YR6/4, moderate surface, inside coating slightly lighter than outside 2.5YR5/6; inv. no. 1/60/00m (Fig. 13. 4);
- 5 – rim of a bowl type *Conspectus* 1990 form 8, fine fabric with small amount of tiny lime, several quartz grits, slightly porous, hard, fabric greyish-beige 2.5YR5/6, dark red glittering thick coating 2.5YR4/8; inv. no. 2/8/00m (Fig. 13. 5);
- 6 – rim of a bowl type Drag. 35, relief ornament, dark red, thick coating; inv. no. 33/79w (Fig. 13. 6);
- 7 – rim of a bowl type *Conspectus* 1990 form 7, fine fabric with several small inclusions of mica, rather dense structure, hard, rough surface, fabric beige 7.5YR7/6, coating red with reddish tinge 5YR5/6-5/8; inv. no. 9/9/00m (Fig. 13. 7);
- 8 – rim of a dish, fabric rather dense, several tiny lime inclusions, colour of fabric 5Y5/1, surface 2.5Y5/1, inside painted brown strips; inv. no. 18/00w; stripes 22, 23, from mass finds (Fig. 13. 8);

<sup>92</sup> *Portorium ripae Thraciae* about A.D. 100 reached *canabae* of *Dimum*; ISM I, 67, 68, *Histria*. On discussion about the custom border see GEROV 1980a: 22; NESSELHAUF 1939: 334; ØRSTED 1985: 270.

<sup>93</sup> MROZEWICZ 1984: 296.

<sup>94</sup> PANAITE, MAGUREANU 2002: 159.

<sup>95</sup> GEROV 1977: 300.

<sup>96</sup> CIL VI, 32627; cf. SARNOWSKI 1984: 228, n. 30.

<sup>97</sup> MROZEWICZ 1982: 83-84.

<sup>98</sup> MROZEWICZ 1982: 83-84. Aelii and Aurelii attested in *Novae* can be immigrants from Dacia. Cf. IGLNov 91 and MROZEWICZ 1982: 24. Another Aelius named Alexander had lived in the first half of the 3rd century; cf. TOMAS, SARNOWSKI 2007.



- 9 – bottom of a dish with concave ornament, fabric with medium-grained sand inclusion, small amount of lime and mica, slightly porous, fabric grey 5Y5/1, thick matt coating of brownish-purple colour 10YR5/1-4/1; inv. no. 1/145/00m (**Fig. 13. 9**);
- 10 – stem of a stemmed goblet, sea-green glass, small amount of bubbles; inv. no. 40/00w; stripe 17, separated from mass finds (**Fig. 13. 10**);
- 11 – stem from a stemmed goblet, translucent, non-coloured glass; inv. no. 57/00w; stripe 10-12, separated from mass finds (**Fig. 13. 11**);
- 12 – rim of a jug, sea-green glass, big amount of long bubbles, surface moderate; inv. no. 17/1a/00m (**Fig. 13. 12**);
- 13 – fragment of a cup, fabric with small amount of tiny inclusions, several small grits of lime, dense, hard, colour of fabric 5YR6/4, coating 2.5YR4/6, ornament applied; inv. no. 3A/71/00m (**Fig. 14. 1**);
- 14 – fragment of a cup, fabric with tiny inclusions, small quantity of tiny mica and lime, dense, hard, crumbly coating, colour of fabric 2.5Y7/2, coating 5YR6/8, ornament applied; inv. no. 1/141/00m (**Fig. 14. 2**);
- 15 – rim of a bowl, fabric as 14, colour of fabric 5YR6/6, coating 2.5YR5/8, ornament applied; inv. no. 7/13/00m (**Fig. 14. 3**);
- 16 – rim of a bowl, fabric as 15, ornament applied, colour of fabric 7.5YR6/4, coating 10R5/8; inv. no. 7/4/00m (**Fig. 14. 4**);
- 17 – rim of a bowl, fine fabric with tiny inclusions, several lime, dense, hard, moderate surface, crumble coating, colour of fabric 5YR7/6, coating 5YR6/6; inv. no. 1/168/00m (**Fig. 14. 5**);
- 18 – rim of a censer, fabric with medium-grained inclusions, surface porous, cream-coloured, additional appliqué on the rim; inv. no. 134/79w (**Fig. 14. 6**);
- 19 – rim of a jug, fine fabric without inclusions, dense, hard, surface moderate, colour of fabric beige, crumble coating, orange; inv. no. 2/k1/00m (**Fig. 14. 7**);
- 20 – rim of an amphora, fabric with big amount of medium-grained inclusions of sand and red grits, big amount of medium-sized mica flecks, porous, soft, colour 7.5YR7/4; inv. no. 3/24/00m (**Fig. 14. 8**);
- 21 – rim of a coarse bowl, fabric with medium-grained inclusions of sand and red grits, medium quantity of lime inclusions, rather dense, fabric 7.5YR2.5/1, surface 2.5Y4/2; inv. no. 3/30/00m (**Fig. 14. 9**);
- 22 – fragments of glass windows, non-coloured glass; inv. no. 6/00w; east from stripe 24, beyond searched area (**Fig. 15. 1**);
- 23 – stamp on a brick/tile [LE]G I I[TAL]; inv. no. 1/79c (**Fig. 15. 2**);
- 24 – stamp [LEG] I ITAL on a brick/tile; inv. no. 1/00c; stripe 24, 33, no. 5 (**Fig. 15. 3**);
- 25 – stamp PC P on a brick/tile; inv. no. 2/00c; stripe 24, by the road sq. 1 (**Fig. 15. 4**);
- 26 – stamp [C ATON M]A[G] on a brick/tile; inv. no. 3/00c; stripe 15, sq. 13, no. 2 (**Fig. 15. 5**);
- 27 – stamp C A[TON MAG] on a brick/tile; inv. no. 4/k1/00m; western part of the site, no accurate localization (**Fig. 15. 6**);
- 28 – stamp on a brick/tile C ATON [MAG]; inv. no. 2/79c (**Fig. 15. 7**);
- 29 – rim of *mortarium*, coarse fabric with big amount of sand and mica, several big grits of lime, porous structure, rough surface, hard, colour orange-beige; inv. no. GR/1/00 (**Fig. 16. 1**);
- 30 – rim of a bowl, fabric with big amount of tiny mica and several inclusions of lime, rather dense, moderate, hard, covered with slightly crumbling coating, fabric orange-beige, surface orange, ornament applied; inv. no. GR/2/00 (**Fig. 16. 2**);
- 31 – fragment of a jug with handle, fabric as 30, soft, powdery surface, fabric beige, covered with light brown, crumbling coating; inv. no. GR/3/00 (**Fig. 16. 3**);
- 32 – fragment of a jar, wheel turned, fabric with medium-grained inclusions of sand, big quantity of tiny lime, small quartz grits, porous, rough surface, hard, colour light grey; inv. no. GR/4/00 (**Fig. 16. 4**);
- 33 – fragment of a dish, fine fabric with tiny inclusions, without inclusions, rather dense, hard, surface moderate, matt coating inside; inv. no. GR/5/00 (**Fig. 16. 5**);
- 34 – stamp LEG I ITAL on a brick/tile; from the grave; inv. no. GR/6/00c (**Fig. 16. 6**);



- 35 – terracotta torso of an eagle, fine fabric with small amount of inclusions, soft, crumbling coating, fabric colour orange-red; inv. no. 63/00w; stripe 4, sq. 5, no. 2 (**Fig. 16. 7**);
- 36 – coin, *antoninianus* of Probus; AE, *Siscia*, RIC 644; Av: bust in *corona radiata* right, IMP C M AVR PROBUS AVG; Rv: Probus standing right, receives the globe from Jupiter standing left, CLEMENTIA TEMP, in a field: A, below XXI; inv. no. 62/00w, ca 30 m west from the stripe 1, sq. 10 (**Fig. 16. 8**);
- 37 – coin, AE, Elagabalus, *Pautalia* (Thrace); Av: bust laureate right, [AYT K M AYP ANTΩNEINOC]; Rv: Nemesis standing left, ΟΥΛΠΙΑC ΠΑΥ[ΤΑΛΙΑC]; inv. no. 47/00w, stripe 15, sq. 15, no. 2; not illustrated;
- 38 – coin, bronze, diam. 2 cm, Thrace, half of 3rd cent. A.D. (Trajan Decius?); inv. no. 12/00w, stripe 23, sq. 24, no. 5; not illustrated;
- 39 – arrow spike, bronze; inv. no. 5/00w; stripe 22, sq. 14, no. 4 (**Fig. 17. 1**);
- 40 – arrow spike, bronze; inv. no. 10/00w; stripe 23, sq. 25, no. 5 (**Fig. 17. 2**);
- 41 – arrow spike, bronze; inv. no. 70/00w; stripe 10, sq. 11, no. 4 (**Fig. 17. 3**);
- 42 – iron knife; inv. no. 41/00w; stripe 14, sq. 16, no. 6 (**Fig. 17. 4**);
- 43 – iron knife; inv. no. 51/00w; stripe 3, sq. 3, no. 7 (**Fig. 17. 5**);
- 44 – bronze ring; inv. no. 44/00w; stripe 18, no accurate localization (**Fig. 17. 6**);
- 45 – fragment of a votive plate, marble (**Fig. 17. 7**);
- 46 – fragment of a glass bracelet, dark blue glass; inv. no. 39/00w; stripe 12A, sq. 9, no. 4 (**Fig. 18. 1**);
- 47 – fragment of a glass bracelet, dark blue glass; inv. no. 16/00w; stripe 23, sq. 9, no. 4 (**Fig. 18. 2**);
- 48 – fragment of a glass bracelet, dark blue glass; inv. no. 9/00w; stripe 23, sq. 3, no. 1 (**Fig. 18. 3**);
- 49 – coin, bronze, *foliis*, anonymous Byzantine emission, 10th- 11th cent. A.D.; Av: bust of Christ in a halo *en face*, EMMANOVHA IX-XC; Rv: IHSVS XRISTVS BASILEV BASILE in four lines; inv. no. 25/00w; stripe 3, sq. 4, no. 1 (**Fig. 18. 4**);
- 50 – rim of a hand made vessel, wheel turned after modelling, fabric as 47, porous, hard, rough surface, fabric black, surface beige, traces of fire, incised ornament; inv. no. 13/1a/00m (**Fig. 18. 5**);
- 51 – fragment of a hand-made vessel, body sherd, fabric with a big quantity of medium-grained inclusions of sand, big quantity of lime, very big quantity of little flecks of mica, porous, rough surface, fabric grey, surface beige to grey, waved ornament; inv. no. 20/1a/00m (**Fig. 18. 6**);
- 52 – rim of a hand-made vessel, fabric with big quantity of small sand grits, lime and mica, porous, rough surface, hard, colour greyish-beige; inv. no. 14a/k1/00w (**Fig. 18. 7**);
- 53 – fragment of a hand-made vessel, wheel-turned after modelling (?), fabric with big amount of coarse-grained inclusions of sand (small translucent grits), big quantity of lime, tiny mica flecks and red inclusions, porous, hard, rough surface, fabric black, surface greyish-beige, the relief „potter’s stamp”; inv. no. 23/1a/00m (**Fig. 18. 8**).

## Abbreviations

Dacia N.S.	Dacia, Nouvelles séries
GSUFF	Godishnik na Sofijskiya Universitet Fakultet po Klasicheski i Novi Filologii
GSUIF	Godishnik na Sofijskiya Universitet Istoriko-Filozoficheski Fakultet
IAI	Izvestiya na Archeologicheskiya Institut
IDR	<i>Inscriptiones Daciae romanae</i> , vol. 5, fasc. 1-2, <i>Inscriptiones d'Apulum</i> , I. Piso ed. [Mémoires de l'Académie des Inscriptions et Belles-lettres, vol. 24], Paris 2001.
IGLNov	V. BOZILOVA, J. KOLENDO, <i>Les inscriptions grecques et latines de Novae (Mésie Inférieure)</i> , Bordeaux 1997
IIMVT	Izvestiya na Istoricheski Muzey Veliko Turnovo
IOMVT	Izvestiya na Okruzhnija Muzey Veliko Turnovo
IRAIK	Izvestiya Russkogo Archeologicheskogo Instituta v Konstantinopole
RE	<i>Real-Encyclopädie der Classischen Altertumswissenschaft</i> , G. Wissowa ed.
RIC	Roman Imperial Coinage
SHA	<i>Sriptores historiae Augustae (Historycy cesarstwa rzymskiego: żywoty cesarzy od Hadriana do Numeriana)</i> , H. Szelest trad., Warszawa 1966)



## Bibliography

### BARKÓCZI

- 1954 L. Barkóczy, *Beiträge zum Rang der Lagerstadt am Ende des II. und Anfang des III. Jahrhunderts* [ActaArchHung, vol. 3, 1953], Budapest, p. 201-203.

### BIERNACKA-LUBAŃSKA

- 1997 M. Biernacka-Lubańska, *System wodociagowy w Novae*, Novensia 9, p. 5-79.

### BJELJAJAC

- 1996 L. Bjeljajac, *Amfore Gornjo Mezijskog Podunavlja*, Beograd.

### BÖTTGER

- 1982 B. Böttger, *Die Gefäßkeramik aus dem Kastell Iatrus* [in:] *Iatrus-Krivina, spätantike Befestigung und frühmittelalterliche Siedlung an der unteren Donau*, vol. 2, Berlin, p. 33-148.  
1991 B. Böttger, *Die Gefäßkeramischen Funde (1975-1981)* [in:] *Iatrus-Krivina, spätantike Befestigung und frühmittelalterliche Siedlung an der unteren Donau*, vol. 4, Berlin, p. 157-166.  
1995 B. Böttger, *Die Gefäßkeramik aus Iatrus und ihre wirtschaftlichen Aussagen* [in:] *Iatrus-Krivina, spätantike Befestigung und frühmittelalterliche Siedlung an der unteren Donau*, vol. 5, Berlin, p. 157-166.

### CHICHIKOVA

- 1980 M. Chichikova, *Forschungen in Novae*, Klio 62, p. 55-66.  
1992 M. Chichikova, *L'édifice à péristyle extra muros à Novae (Moesia Inferior)* [in:] *Studia Aegea et Balcanica in honorem Lodovicae Press*, Warszawa, p. 235-241.

### COMŞA

- 1969 M. Comşa, *Ein Begräbnis – Fundverband aus dem 9.-10. Jh. in Fintirele (Kreis Teleorman)*, Dacia N.S. 13, p. 27-117.

### CONRAD

- 2003 S. Conrad, *Archaeological Survey on the Lower Danube. Results and Perspectives, Paper delivered at the international conference „Chora, catchments and communications”. Sandbjerg, Denmark, 31. Aug.- 3 Sept.* (in print.).  
2006 S. Conrad, *Archaeological Survey on the Lower Danube: Results and Perspectives, 2006* [in:] *Surveying the Greek Chora. The Black Sea Region in a Comparative Perspective. International conference, Sandbjerg, Denmark (31 August - 3 September 2003)* [Black Sea Studies, vol. 4], Aarhus, p. 309-331.

### CONRAD, STANCHEV

- 2002 S. Conrad, D. Stanchev, *Archaeological Survey on the Roman Frontier on the Lower Danube between Novae and Sexaginta Prista. Preliminary Report (1997-2000)* [in:] *Limes XVIII. Proceedings of the XVIIIth International Congress of Roman Frontier Studies held in Amman, Jordan (September 2000)*, P. Freeman et al. eds [BARIntSer, vol. 1084 (II)], Oxford, p. 673-684.

### Conspectus

- 1990 *Conspectus Formarum Terrae Sigillatae Italico Modo Confectae*, Bonn.

### DIMITROV, CHICHIKOVA, SOULTOV

- 1964 D.P. Dimitrov, M. Chichikova, B. Soultov, *Archeologicheski raskopki w vostochnom sektore Nove prez 1962 g.*, IAI 27, p. 217-235.

### DIMITROVA-MILČEVA

- 2002 A. Dimitrova-Milčeva, *Terra sigillata und dünnwandige Keramik aus Moesia inferior*, Sofiya.

### DOLMOVA

- 1985 M. Dölmova, *Kum vuprosa za proizvodstvoto na sgrafito keramika v Turnovgrad (XIII-XIV v.)*, ArcheologijaSof 27, fasc. 2, p. 10-20.

### DONEVSKI

- 1991 P. Donevski, *Razkopki v mestnostta “Ostrite Mogili”, iztochno ot Nove, Archeologicheski Otkritiya i Raskopki prez 1990 g.*, Lovech, p. 95-96.  
1997 P. Donevski, *New Late Roman Fortress in Svishtov to the west of Novae* [in:] *Late Roman and Early Byzantine Cities on the Lower Danube from the 4th to the 6th Centuries A.D.*, A. Biernacki, P. Pawlak eds, Poznań 1997, p. 35-38.



DYCZEK

- 1999 P. Dyczek, *Amfory rzymskie z obszaru dolnego Dunaju*, Warszawa.

FALKNER

- 1999 R.K. Falkner, *The Pottery* [in:] *Nicopolis ad Istrum: A Roman to Early Byzantine City. The Pottery and Glass*, London, p. 55-296.

GACUTA

- 1987 W. Gacuta, *Przedmioty metalowe z Novae – kampanie wykopaliskowe z lat 1960-69, 1971, 1973, 1975 i 1977*, *Novensia* 1, p. 75-176.

GEROV

- 1954 B. Gerov, *Romanizmut mezhdu Dunava i Balkana*, vol. 2, GSUFF 57, 1950/1952, Sofiya.  
 1964 B. Gerov, *Die Rechtsstellung der untermoesischen Stadt Novae* [in:] *Akten 4. intern. Kongresses für Griechische und Lateinische Epigraphik* (1962), 1964, p. 128-133 (*Beiträge zur Geschichte der römischen Provinzen Moesien und Thrakien*, Amsterdam 1980, p. 113-118).  
 (1980)  
 1977 B. Gerov, *Zum Problem der Entstehung der römischen Städte am Unteren Donaulimes*, *Klio* 59, p. 299-309.  
 1980a B. Gerov, *Zemlevladaneto na rimska Trakiya i Miziya (I-III v.)*, GSUFF 72, fasc. 2, Sofiya.  
 1980b B. Gerov, *Zur epigraphischen Dokumentation des publicum portorii Illyrici et riapae Thraciae*, *Epigraphica* 42, p. 119-130.  
 1980c B. Gerov, *Zur Verteidigung der Städte im Balkanraum während der Nordvolkerinvasionen vom 2. bis zum 4. Jh.* [in:] *Beiträge zur Geschichte der römischen Provinzen Moesien und Thrakien, Gesammelte Aufsätze*, Amsterdam, p. 285-288.

HENSEL

- 1965 W. Hensel, *Materiały z badań archeologicznych w Bułgarii*, *SlavA* 12, p. 235-287.

HESBERG, ZANKER

- 1997 *Römische Gräberstraßen. Selbstdarstellung – Status – Standort. Kolloquium in München vom 28. bis 30. Oktober 1985*, H. von Hesberg, P. Zanker eds, München.

HORN

- 1987 *Die Römer in Nordrhein-Westfalen*, H.-G. Horn ed., Stuttgart.

IVANOV

- 1997 R. Ivanov, *Das römische Verteidigungssystem an der unteren Donau zwischen Dorticum und Durostorum (Bulgarien) von Augustus bis Maurikios* [Berichte der RGK, vol. 78], Mainz am Rhein.  
 1999 R. Ivanov, *Dolnodunavskata otbranitelna sistema mezhdu Dortikum i Durostorum ot Avgust do Mavrikiy*, Sofiya.  
 2002 R. Ivanov, *Stroitelna keramika ot dolnija Dunav (Eskus – Novae – Durostorum)*, Sofiya.

KOLENDO

- 1969 J. Kolendo, *Dea Placida à Novae et le culte d'Hécate, la bonne déesse*, *ArcheologiaWarsz* 20, p. 77-84.  
 1991 J. Kolendo, *Kult Jeźdźca Trackiego w Novae*, *Novensia* 2, p. 45-50.

KOŁKÓWNA

- 1961 S. Kołkówna, *Odcinek V. Nekropola południowo-wschodnia* [in:] *Sprawozdanie tymczasowe z wykopalisk w Novae w 1960 roku*, *ArcheologiaWarsz* 12, p. 123-128.

KOUZMANOV

- 1985 G. Kouzmanov, *Rannovizantijska keramika ot Trakiya i Dakiya (IV – nachaloto na VII vek)*, Sofiya.

LENGYEL, RADAN

- 1980 *The Archaeology of Roman Pannonia*, A. Lengyel, G.T.B. Radan eds, Budapest.

LIPA

- 2000 Sz. Lipa, *Badania teledetekcyjne w Novae*, *Novensia* 12, p. 133-147.

MASON

- 1988 D.J.P. Mason, *"Prata legionis" in Britain*, *Britannia* 19, p. 163-189.

MAZUROWSKI

- 1971 R. Mazurowski, *Metoda szczegółowej inwentaryzacji powierzchniowej*, *Sprawozdania archeologiczne* 23, p. 293-306.

MITOVA-DJONOVA

- 1961 D. Mitova-Djonova, *Svetilishte na Dionis kray Svishtov*, *ArcheologijaSof* 4, fasc. 2, p. 21-24.  
 1966 D. Mitova-Djonova, *Peshti za keramika i keremidi ot Nove*, *ArcheologijaSof* 8, fasc. 1, p. 38-45.



MÓCSY

- 1974 A. Mócsy, *Il problema delle condizioni del suolo attribuito alle unità militari nelle provincie danubiane* [in:] *Atti del Convegno Internazionale sul tema: I diritti locali nelle provincie romane con particolare riguardo alle condizioni giuridiche del suolo* [Accademia Nazionale dei Lincei, vol. 371], Roma, p. 345-355.

MOUSHMOV

- 1912 N.A. Moushmov, *Antichnite moneti na Balkanskiya poluostrov i monetite na bulgarskite tsare*, Sofiya.

MROZEWICZ

- 1980 L. Mrozewicz, *Einige Bemerkungen zur demographischen Struktur Novae (Moesia Inferior)*, Eos 68, p. 349-354.
- 1981 L. Mrozewicz, *Municipium Novae: problem lokalizacji* [in:] *Novae – Sektor Zachodni 1976, 1978*, S. Parnicki-Pudęłko ed., Poznań, p. 197-200.
- 1982 L. Mrozewicz, *Rozwój ustroju municypalnego a postępy romanizacji w Mezji Dolnej*, Poznań.
- 1984 L. Mrozewicz, *Ze studiów nad rolą canabae w procesie urbanizowania terenów pogranicza reńsko-dunajskiego w okresie wczesnego cesarstwa* [in:] *Novae i kultura starożytna*, W. Pająkowski, L. Mrozewicz eds [Balcanica Posnaniensia, vol. 3], Poznań, 285-297.

NAYDENOVA

- 1990 V. Naydenova, *Le Mithraeum récemment decouvert à Novae (Mésie inférieure)* [in:] *Akten des XIII Internationalen Kongresses für klassische Archäologie, Berlin 1988*, Mainz, p. 607-608.
- 1999 V. Naydenova, *Le culte de Mithra à Novae (Mésie Inférieure)* [in:] *Der Limes an der unteren Donau von Diokletian bis Heraklios*, G. v. Bülow, A. Milčeva eds, Sofia, p. 117-120.

NESSELHAUF

- 1939 H. Nesselhauf, *Publicum portorii Illyrici utriusque et ripae Thraciae*, Epigraphica 1, p. 331-338.

OLCZAK

- 1995 J. Olczak, *Szkoło rzymskie z terenu komendantury w Novae*, Novensia 8, p. 15-86.
- 1998 J. Olczak, *Produkcja szkła w rzymskim i wczesnobizantyjskim Novae*, Toruń.

ØRSTED

- 1985 P. Ørsted, *Roman Imperial Economy and Romanization. A Study in Roman Imperial Administration and the Lease System in the Danubian Provinces from the First to the Third Century A.D.*, Copenhagen.

OVCHAROV, HADJIYEVA

- 1990 N. Ovcharov, D. Chadjiyeva, *Srednovekoviyat manastir v gr. Kurdjali-tsentur na episkopiyata Archidos (XI-XIV v.)* [Razkopki i prouchvaniya, vol. 24], Sofiya.

PANAITE, MAGUREANU

- 2002 A. Panaite, A. Magureanu, *Some Observations Concerning Several Late Roman and Early Byzantine Fortifications from The Lower Danube* [in:] *The Roman and Late Roman City. The International Conference (Veliko Turnovo 26-30 July 2000)*, Sofia, p. 159-166.

PARNICKI-PUDEŁKO

- 1961 S. Parnicki-Pudęłko, *Topografia Novae* [in:] *Sprawozdanie z wykopalisk w Novae w 1960 r.*, K. Majewski ed., ArcheologiaWarsz 12, p. 87-92.
- 1981 S. Parnicki-Pudęłko, *Canabae Novae: problem lokalizacji* [in:] *Novae – Sektor Zachodni 1976, 1978*, S. Parnicki-Pudęłko ed., Poznań, p. 201-204.

PETRIKOVITS

- 1977 H. von Petrikovits, *Kleinstädte und nichtstädtische Siedlungen im Nordwesten des römischen Reiches* [in:] *Das Dorf der Eisenzeit und des frühen Mittelalters*, H. Jankuhn ed. [Abhandlungen der Akad. d. Wissenschaften in Göttingen Philol.-hist. Klasse 3. Folge, vol. 101], Göttingen.

PISO

- 1991 I. Piso, *Die Inschriften vom Pfaffenberg und der Bereich der canabae legionis*, Tyche 6, p. 131-169.

POULTER

- 2004 A.G. Poulter, *Cataclysm on the Lower Danube: the Destruction of a complex Roman Landscape* [in:] *Landscapes of Change. Rural Evolutions in Late Antiquity and the Early Middle Ages*, N. Christie ed., Aldershot, p. 2-23.

PRESS, SARNOWSKI

- 1987 L. Press, T. Sarnowski, *Novae, rzymska twierdza legionowa i miasto wczesnobizantyjskie nad dolnym Dunajem*, Novensia 1, p. 289-322.



# RAKEVA-MORFOVA

- 1970 Z. Rakeva-Morfova, *Rimskite chastni i imperatorski tuchli s pechati ot Dunauskoto i Chernomorsko kraybrezhe*, ArcheologijaSof 12, fasc. 3, p. 33-43.

# SADURSKA

- 1984 A. Sadurska, *Funkcja i geneza motywów mitologicznych w rzeźbie z Novae (Attys, Europa)* [in:] *Mezja-Tracja-Balkany*, S. Parnicki-Pudęłko, W. Pająkowski, L. Mrozewicz eds [Balcanica Posnaniensia, vol. 1], Poznań, p. 191-203.

# SARNOWSKI

- 1976 T. Sarnowski, *Novae jako siedziba pierwszego legionu Italskiego*, ArcheologiaWarsz 27, p. 50-65.  
 1979 T. Sarnowski, *Badania powierzchniowe w okolicy Novae* [in:] *Novae – Sektor Zachodni 1977. Sprawozdanie tymczasowe z wykopalisk Ekspedycji Archeologicznej Uniwersytetu Warszawskiego*, K. Majewski ed., ArcheologiaWarsz 30, p. 207-210.  
 1983 T. Sarnowski, *Die Ziegelstempel aus Novae*, ArcheologiaWarsz 34, p. 17-61.  
 1984 T. Sarnowski, *Na marginesie dyskusji nad rodowodem nazwy dolnomezyjskiego miasta Novae* [in:] *Novae i kultura starożytna*, W. Pająkowski, L. Mrozewicz eds [Balcanica Posnaniensia, vol. 3], Poznań, p. 221-232.  
 1996 T. Sarnowski, *Die römische Anlegestelle von Novae in Moesia inferior* [in:] *Roman Limes on the Middle and Lower Danube*, P. Petrovich ed., Belgrade, p. 195-200.  
 1997 T. Sarnowski, *Legionsziegel an militärischen und zivilen Bauplätzen der Prinzipatszeit in Niedermoesien* [in:] *Roman Frontier Studies 1995. Proceedings of the XVIth International Congress of Roman Frontier Studies*, Oxford, p. 497-501.

# SCORPAN

- 1970 C. Scorpan, *Aspecte ale continuității și romanizurii buștinașilor din Dobrogea, în lumina recentelor cerceturi*, Pontica 3, p. 139-187.  
 1973 C. Scorpan, *La continuité de la population et des traditions gètes dans les conditions de la romanisation de la Scythia Minor*, Pontica 6, 137-151.

# SHKORPIL

- 1905 K. Shkorpil, *Nekotoryje iz dorog vostochnoj Bolgarii*, IRAIK 10, p. 443-502.

# SOULTOV

- 1968 B. Soultov, *Antichni grobni nachodki ot Velikoturnovski okrug*, IOIMVT 4, p. 41-50.  
 1983 B. Soultov, *Ceramic Production on the Territory of Nicopolis ad Istrum (II-IV Century)*, GSUIF 76, fasc. 2.

# STEFANOV

- 1930 S. Stefanov, *Rimskite vodoprovodi na Novae*, IBAI 6, p. 265-279.  
 1956 S. Stefanov, *Starinite po dolniya baseyn na Yantra*, Sofiya.  
 1958 S. Stefanov, *Prinos kum starata istorija na Svishtov do sredata na XVII vek* [in:] *Sto godini Narodno Chitalishte Svishtov*, Svishtov, p. 337-365.

# Styrmen

- 1980 *Styrmen nad Jantrą (Bułgaria). Badania archeologiczne w latach 1961-1964 i 1967-1968*, W. Hensel ed., Wrocław.

# SZTAJERMAN

- 1960 H. Sztajerman, *Spółeczeństwo zachodniorzymskie w III wieku*, Warszawa.

# TAC., Ger.

- 1953 Tacyt, *Germania* [in:] *Wybór pism*, S. Hammer trad., Wrocław .

# TSUROV

- 1995a I. Turov, *Sacral Insription from Nicopolis ad Istrum by Priests from Novae*, Novensia 8, p. 7-14.  
 1995b I. Turov, *Ara sus sakralen nadpis ot Nikopolis ad Istrum*, IIMVT 10, p. 67-73.

# VITRUV.

- 2004 Witruwiusz, *O architekturze ksiąg dziesięć*, K. Kumaniecki trad., Warszawa.

# VITTINGHOFF

- 1971 F. Vittinghoff, *Die rechtliche Stellung der canabae legionis und die Herkunftsangabe castris*, Chiron 1, p. 299-318.  
 1974 F. Vittinghoff, *Das Problem des „Militärterritoriums“ in der vorseverischen Kaiserzeit* [in:] *Atti del Convegno Internazionale sul tema: I dritte locali nelle province romane con particolare riguardo alle condizioni giuridiche del suolo* [Accademia Nazionale dei Lincei, vol. 371], Roma, p. 109-123.



VULOV

- 1962 V. Vulov, *Raskopki na Kaletu v gr. Svishtov*, ArcheologijaSof 4, fasc. 4, p. 7-15.  
 1965 V. Vulov, *Antichni nekropoli v Svishtovsko*, ArcheologijaSof 7, fasc. 1, p. 27-34.  
 1966 V. Vulov, *Pesht za stroitelna keramika ot Nove*, ArcheologijaSof 8, fasc. 1, p. 46-51.

VUZHAROVA

- 1976 Zh. Vuzharova, *Slavjane i Prabulgari*, Sofiya.

ZEEST

- 1960 I.B. Zeest, *Keramicheskaya tara Bospora* [MatlsslA, vol. 83], Moskva.

AGNIESZKA TOMAS (*IA UW*)

*MUNICIPIUM NOVENSIUM?*

REPORT ON THE FIELD SURVEY AT OSTRITE MOGILI, VELIKO TURNOVO DISTRICT

SUMMARY

The article presents field surveys made at the site Ostrite Mogili, 2 km east from Novae, Moesia inferior (present northern Bulgaria). Materials registered during two surveys in 1979 and 2000, as also the localization of the site, indicate, that the settlement was probably a *vicus* situated beyond the area controlled by the military camp.

During the two field surveys materials visible on the surface (building materials, pottery, other finds) were registered within the area of over 10 ha. On this basis

several maps of dispersed materials were drawn. This allowed to reconstruct hypothetical infrastructure of the site.

The results of surveys brought the author to the conclusion, that the site existing from the 1st century A.D. could have been destroyed seriously about the half of the 3rd century A.D. In Late Roman and Early Byzantine period the workshops could have been placed there.

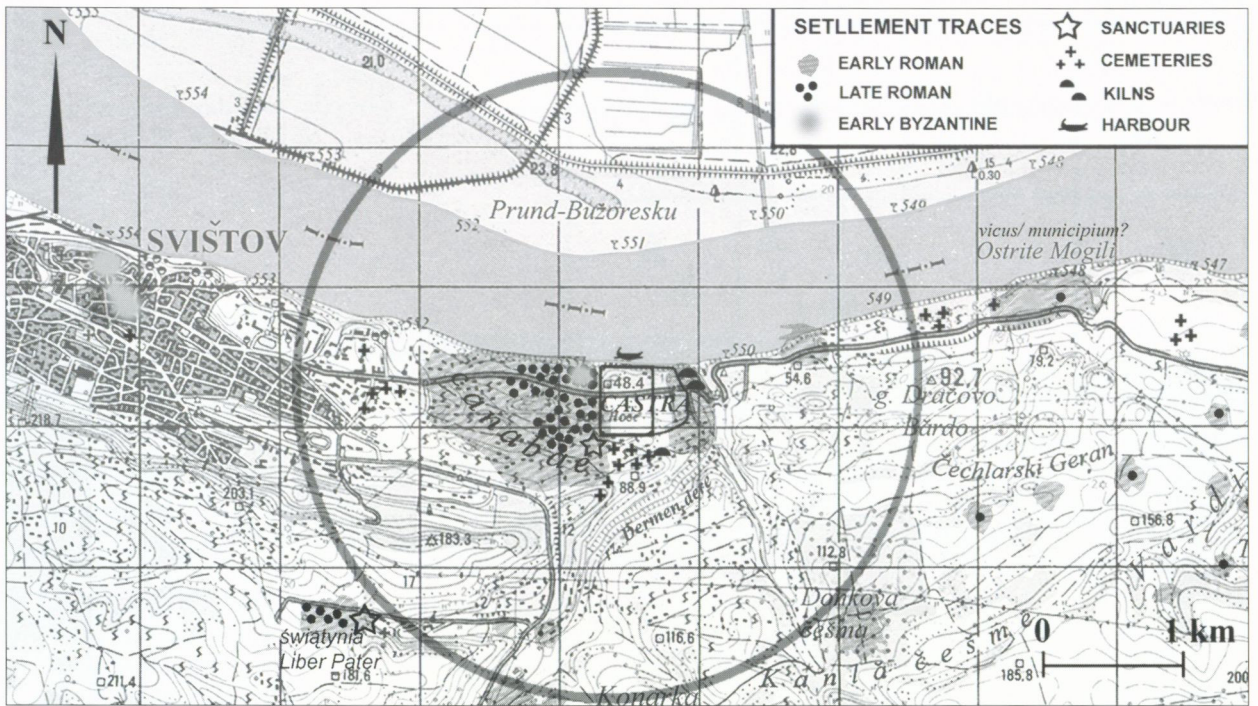


Fig. 1. Surroundings of the *castra legionis I Italicae* near Svishtov. Registered settlement traces from the Roman period.  
By A. Tomas



Fig. 2. Ostrite Mogili – plan of the site. By A. Tomas



PLATE 122



Fig. 3. Ostrite Mogili. View from the west. Photo by A. Tomas



Fig. 4. Ostrite Mogili. View from the east on the sector between the site and the legionary camp. Photo by A. Tomas

Fig. 5. Scheme of used method and marking the units. Symbols represent different categories of finds. By A. Tomas

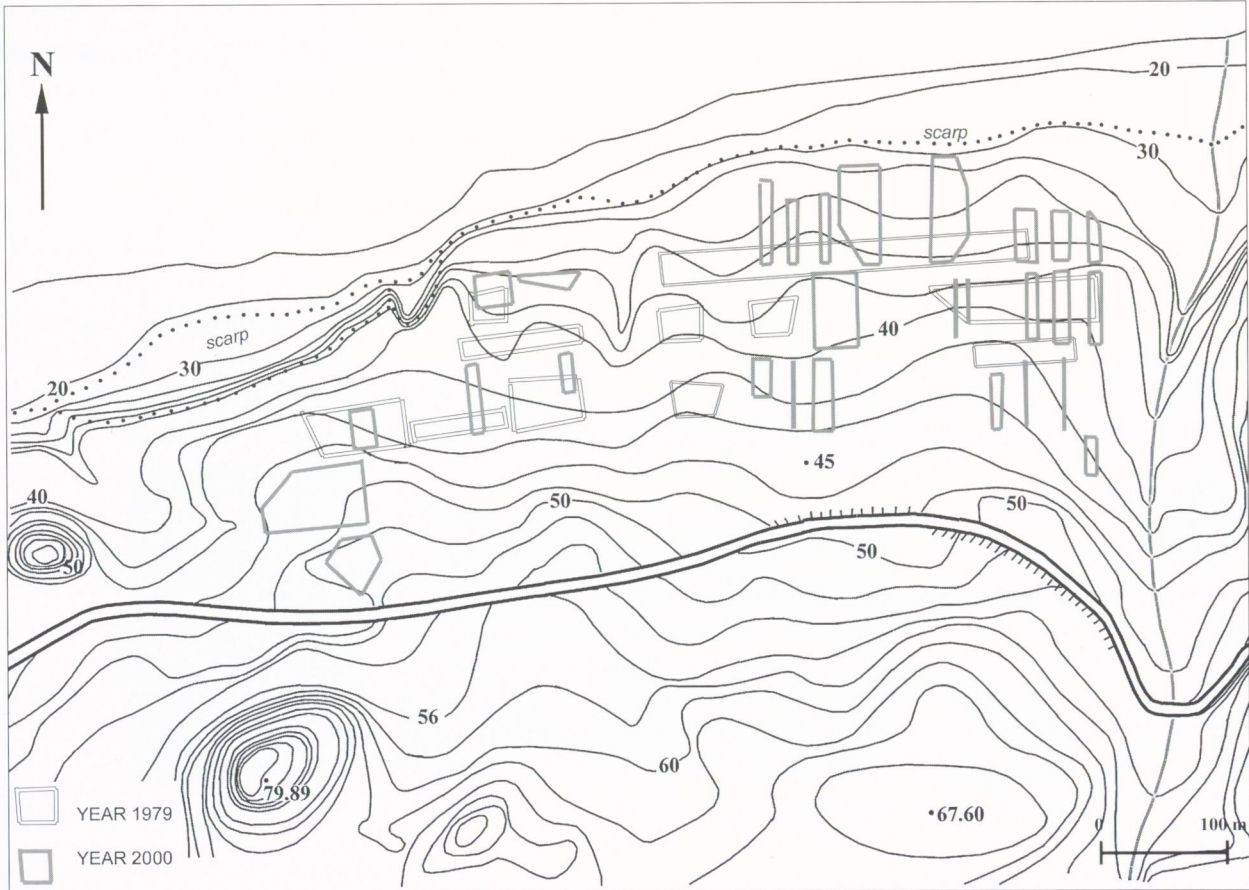
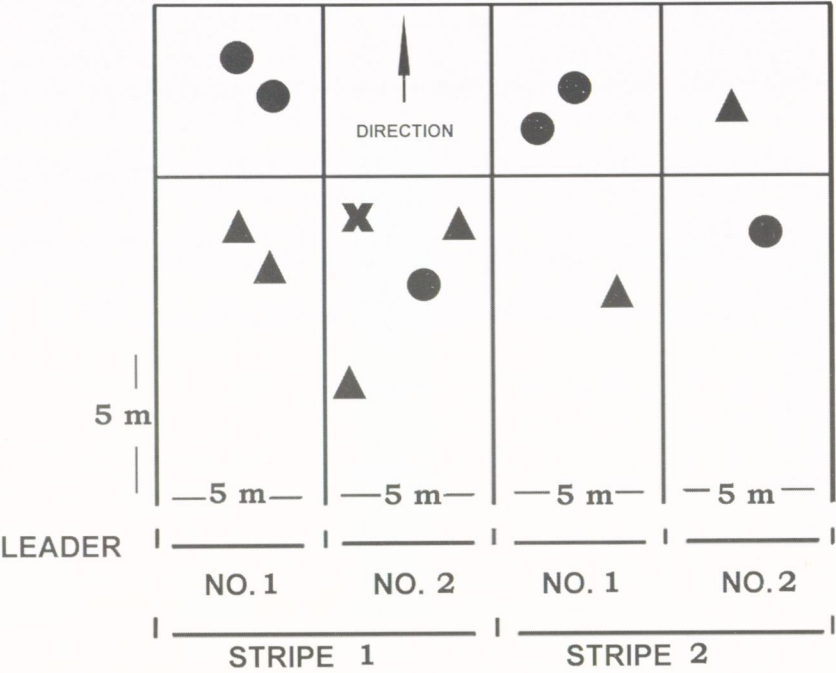


Fig. 6. Ostrite Mogili. Concentrations of pottery. Field survey from 1979 and 2000. By A. Tomas



## PLATE 124

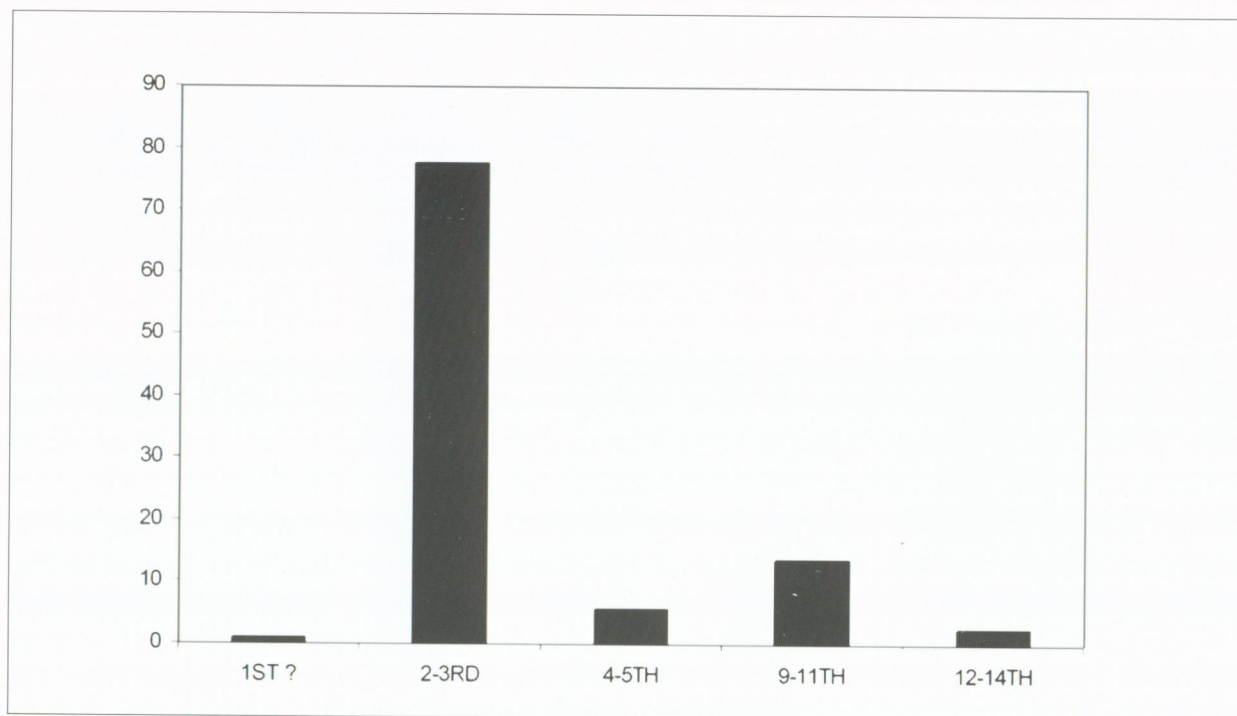


Fig. 7. Ostrite Mogili. Quantities of dated pottery



Fig. 8. Ostrite Mogili. Concentrations of debris. Field survey from 1979 and 2000. By A. Tomas

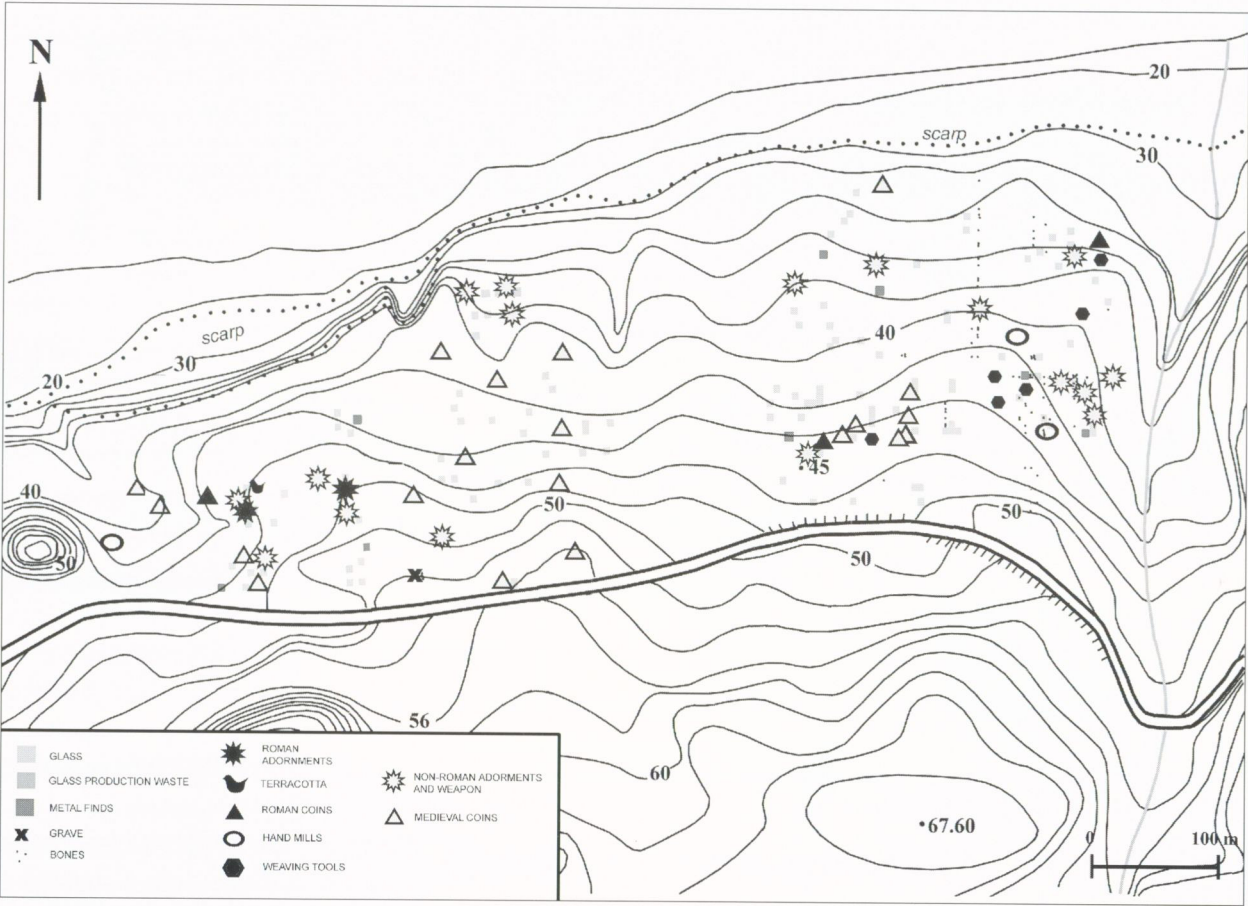


Fig. 9. Ostrite Mogili 2000. Map of dispersion of the other finds. By A. Tomas

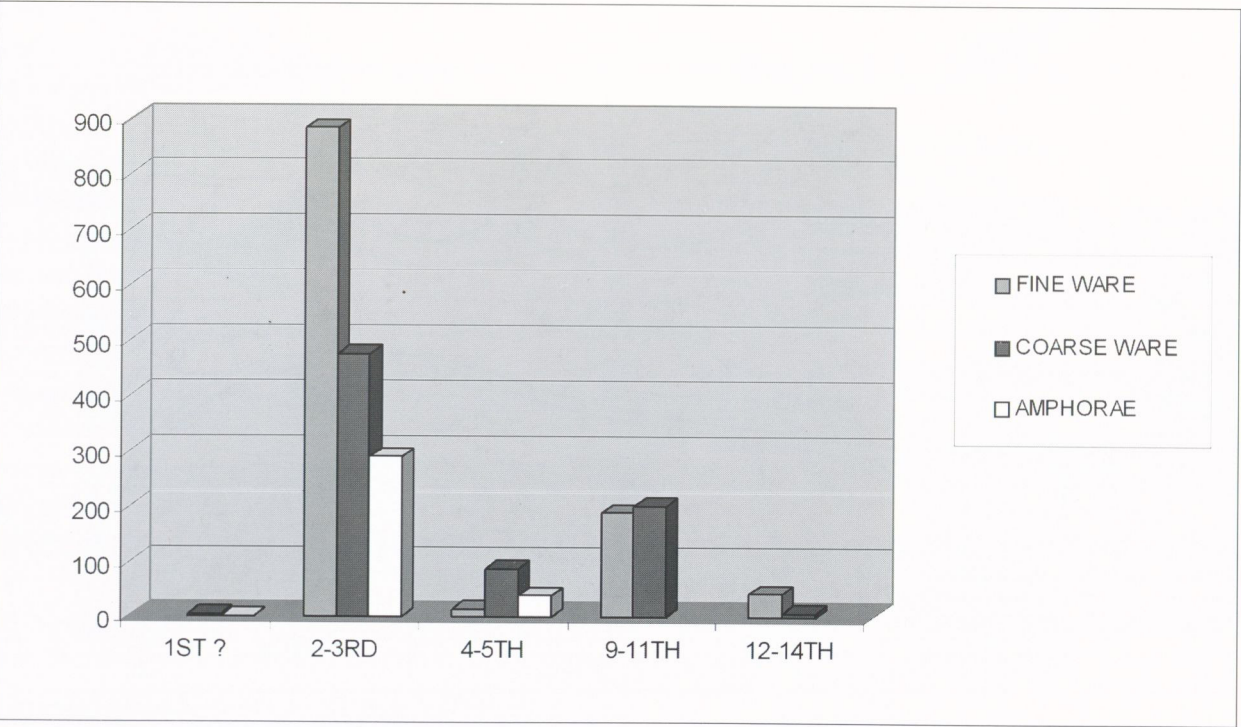


Fig. 10. Amount of some vessel types



PLATE 126

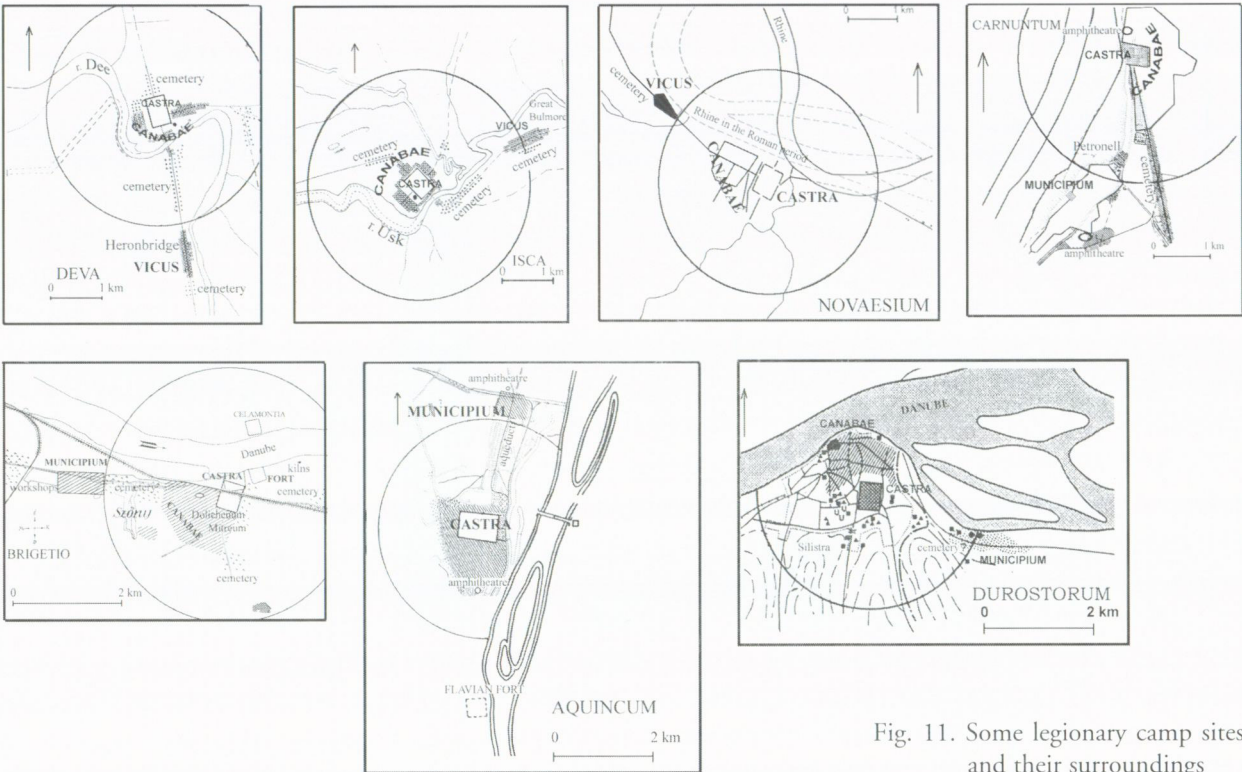


Fig. 11. Some legionary camp sites and their surroundings

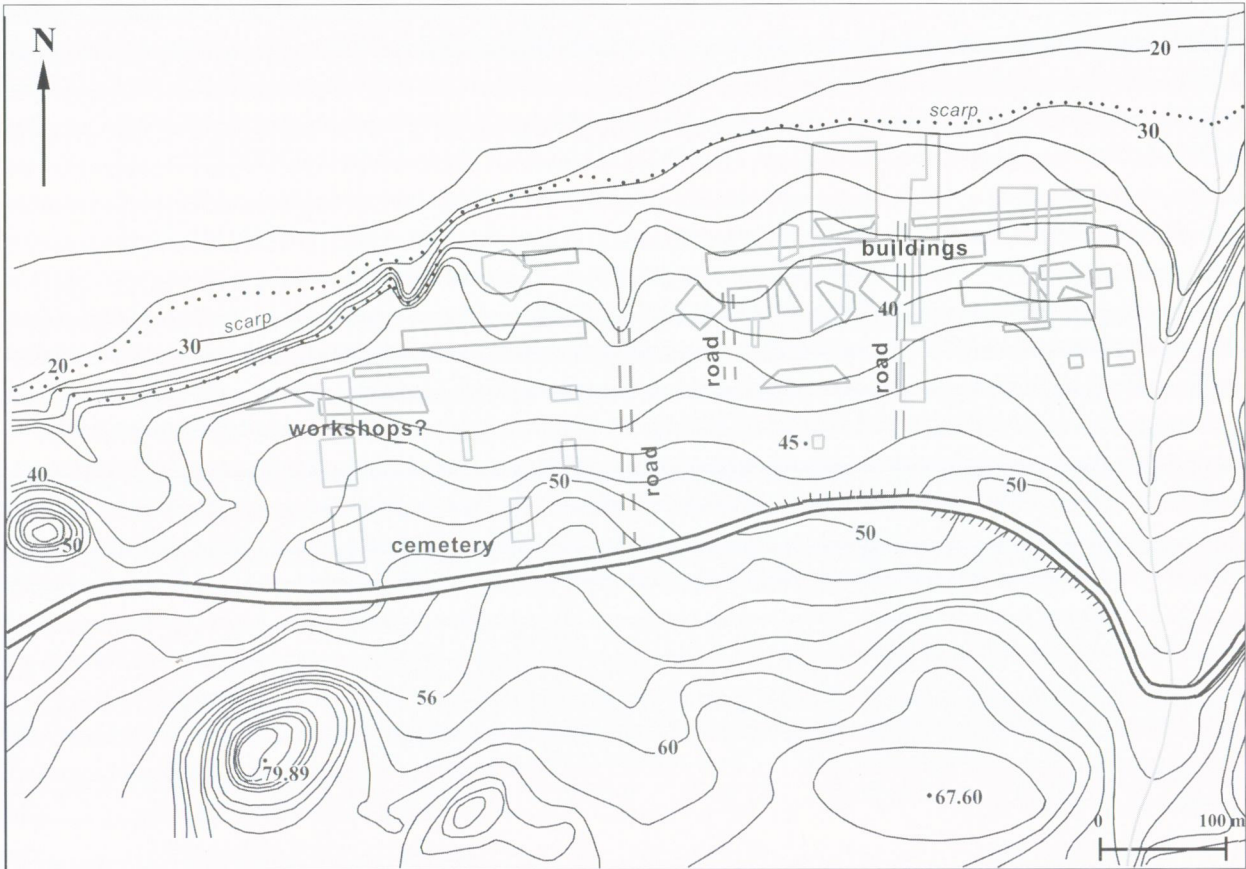


Fig. 12. Ostrite Mogili. An attempt of reconstruction of infrastructure and building covering. By A. Tomas

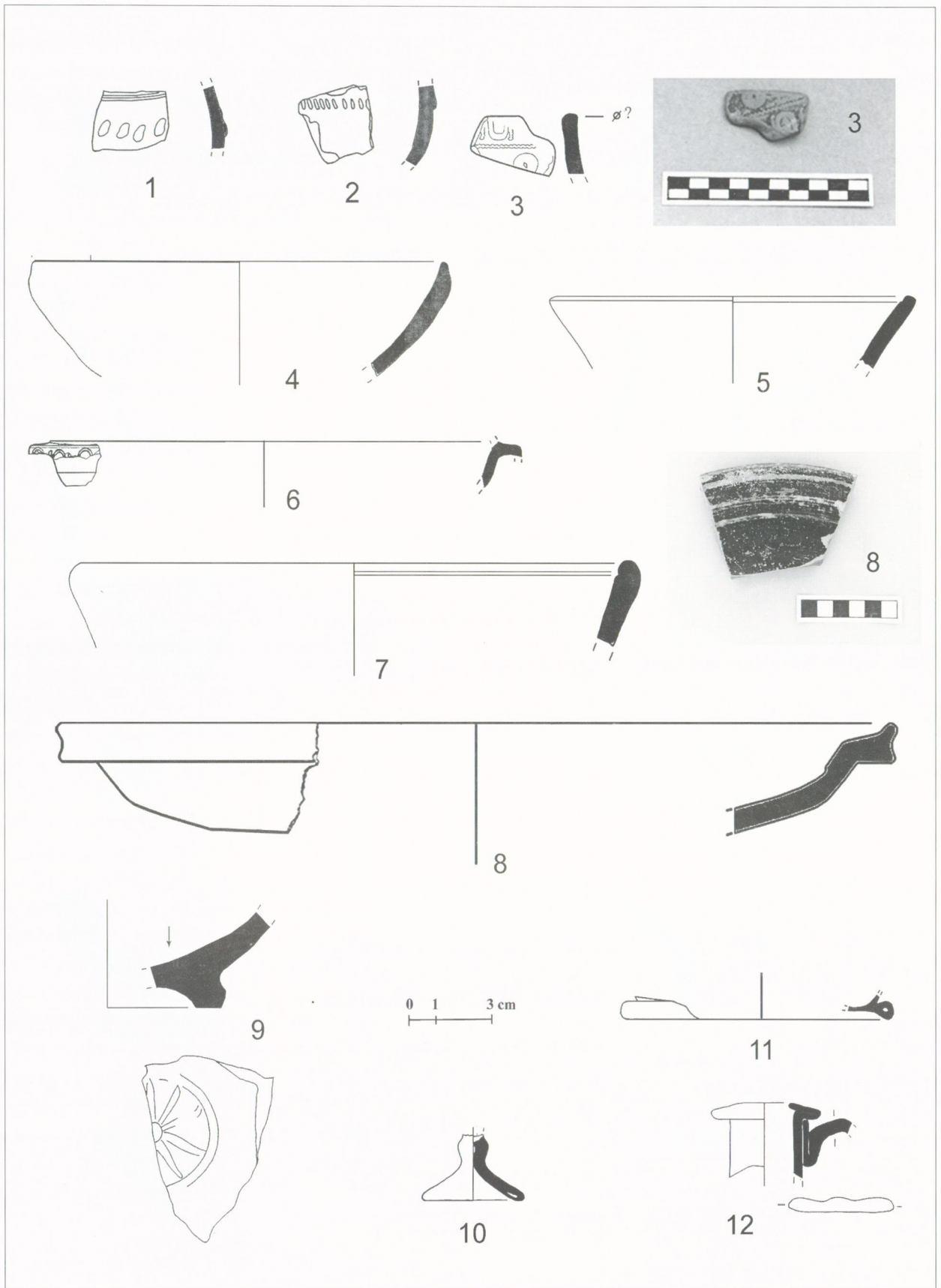


Fig. 13. Ostrite Mogili. Fragments of pottery and glass. Nos. 1, 2 – hand-made vessels (cat. nos. 1, 2); nos. 3-9 – imported ware; 10-12 – glass vessels (cat. nos. 10-12). By A. Tomas, T. Sarnowski, photo by J. Reclaw



## PLATE 128

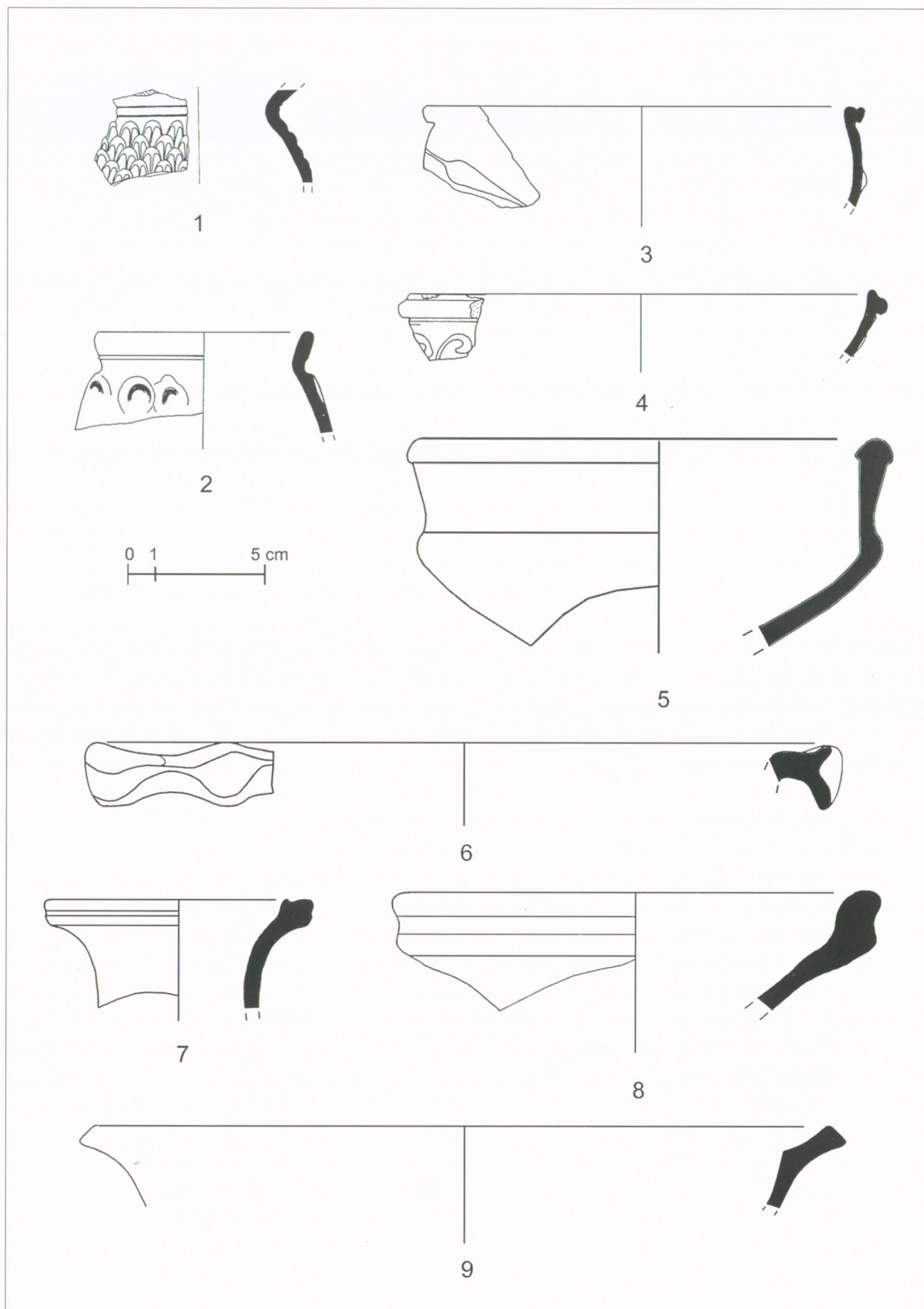


Fig. 14. Ostrite Mogili. Fragments of pottery (cat. nos. 13-21). By A. Tomas

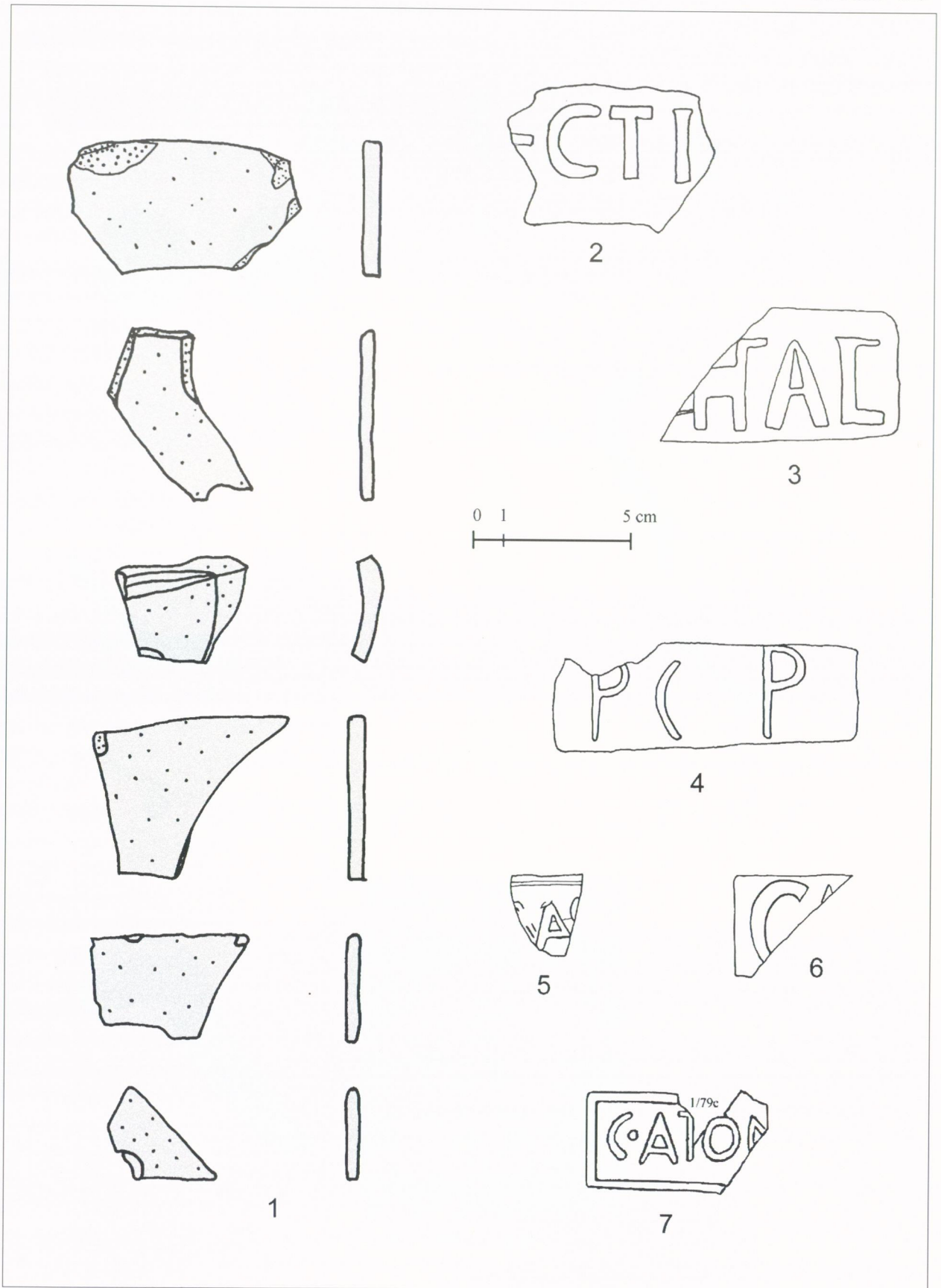


Fig. 15. Ostrze Mogili. Fragments of glass windows (cat. no. 22) and stamps (cat. nos. 23-28). By A. Tomas, T. Sarnowski



## PLATE 130

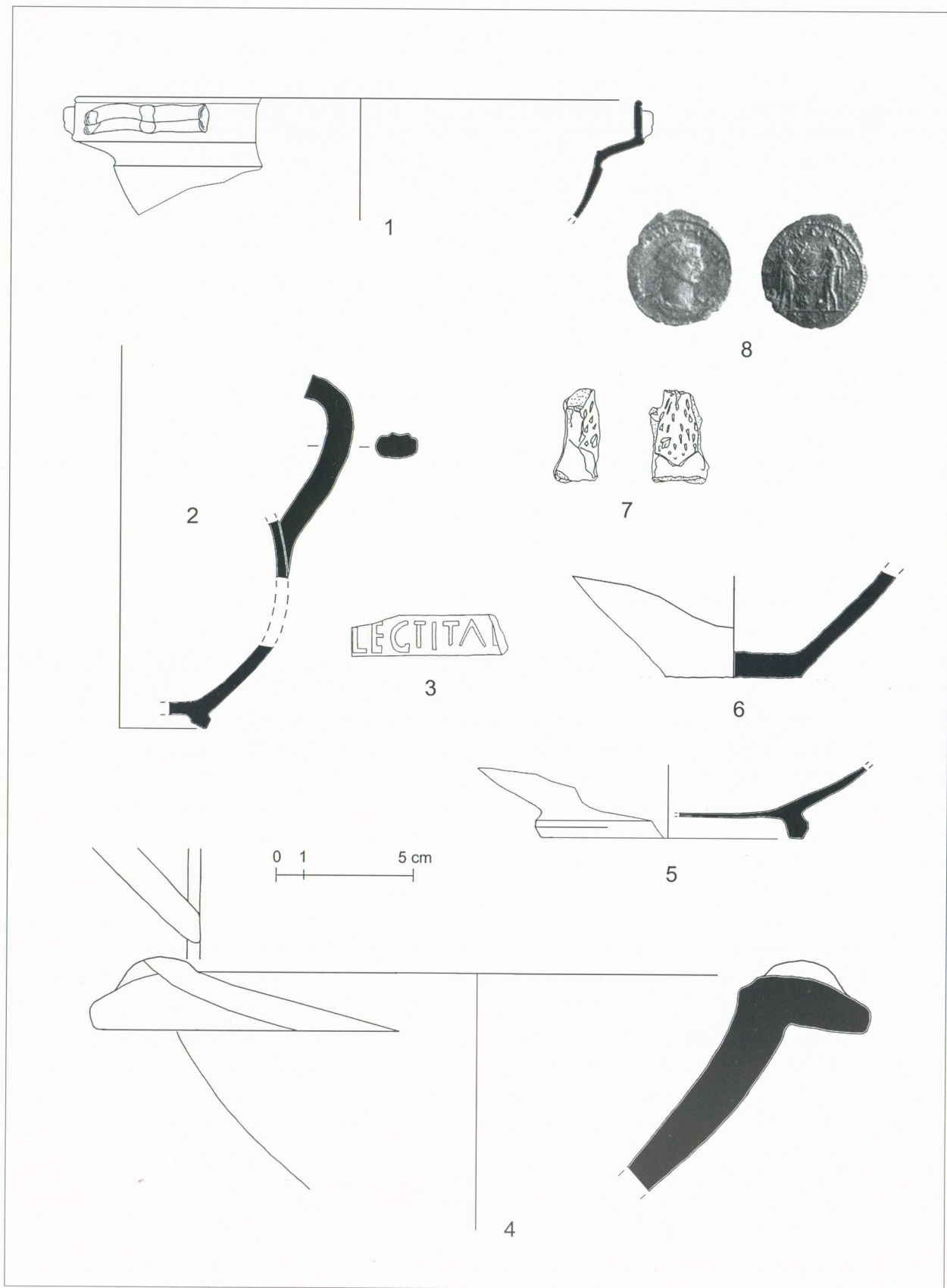


Fig. 16. Ostrite Mogili. Finds from a grave at the western part of the site. Nos. 1-6 – registered grave inventory (cat. nos. 29-33), nos. 7, 8 – finds from the western part of the site (cat. nos. 35, 36). By A. Tomas, photo by J. Reclaw

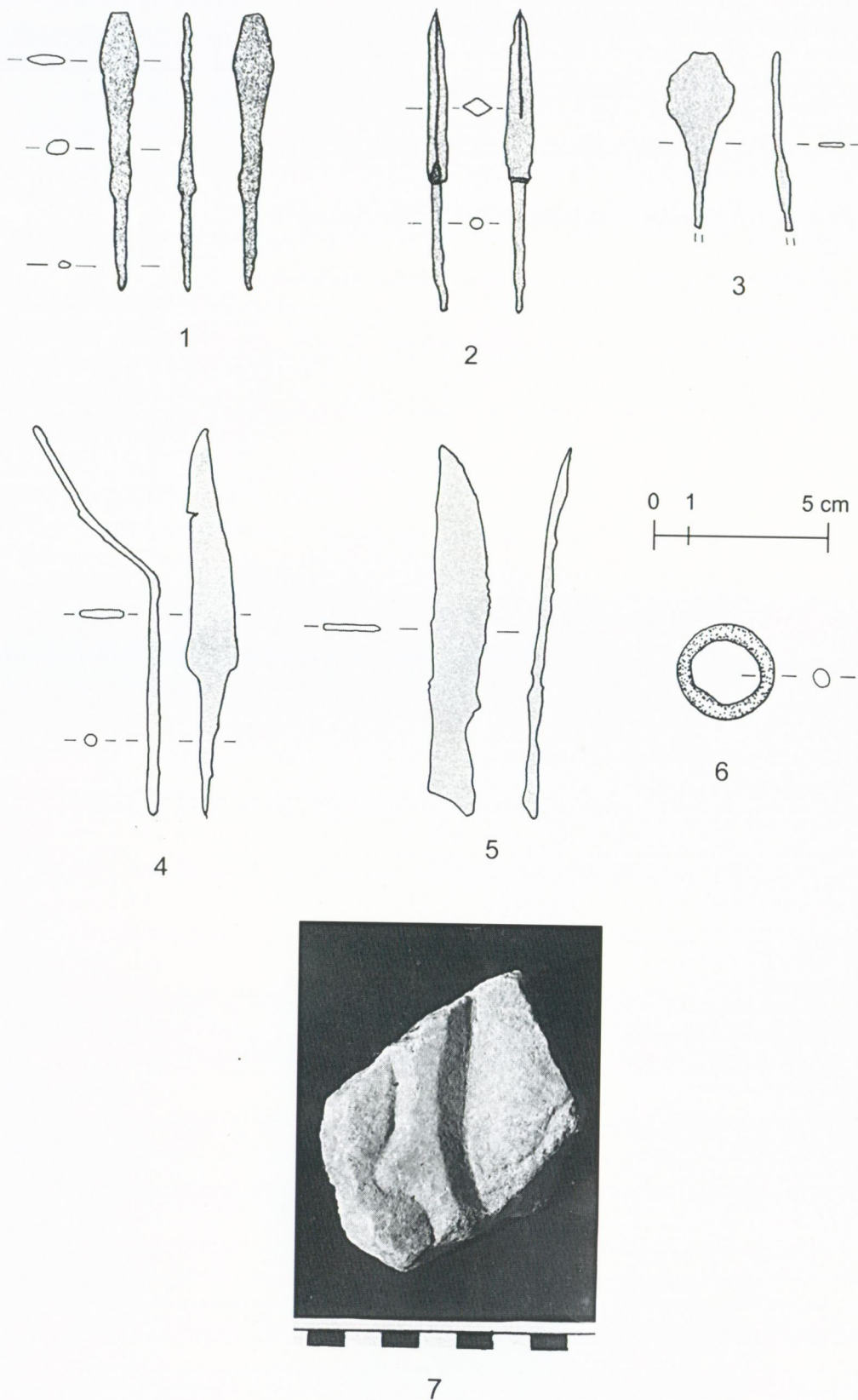


Fig. 17. Ostrite Mogili. Metal finds (cat. nos. 39-45). By A. Tomas



PLATE 132

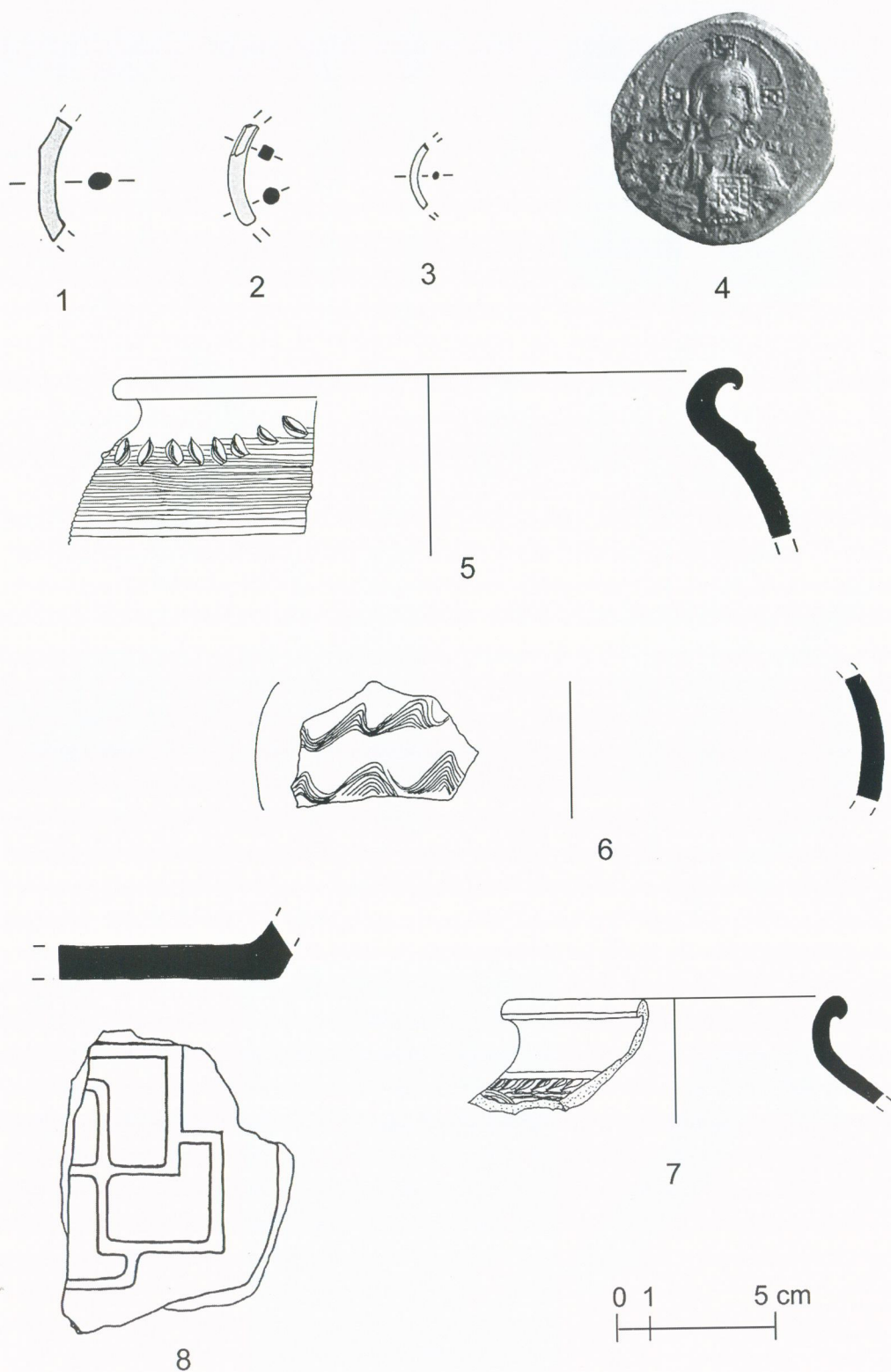


Fig. 18. Ostrite Mogili. Glass jewellery and finds from medieval settlement (cat. nos. 46-53). By A. Tomas, photo by J. Reclaw